

THINGWORX IIOT PLATFORM: A LOOK AHEAD

Rich Caplow
VP, ThingWorx Product Management

28 November 2018



ptc

forum
europe

THIS INFORMATION IS CONFIDENTIAL AND FORWARD LOOKING



Subject to change without notice

This presentation on ThingWorx™ status & roadmap is a preliminary version and not subject to your license agreement or any other agreement with PTC. This document contains intended strategies, developments, and functionalities of the ThingWorx™ product. The following information is furnished for information use only and is not intended to be binding upon PTC to any particular course of business, product strategy, and/or development.

This document is subject to change and may be changed by PTC at any time without notice. Accordingly, you should not rely on this data for production or purchasing decisions. PTC assumes no responsibility for errors or omissions in this document.

ThingWorx Solutions

SCO

SCP

SCS

ThingWorx Platform

Analytics

Foundation

Build Time

Run Time

Thing
Model

Orchestration

Edge & Industrial Connectivity

PLATFORM INVESTMENT DRIVERS



Solution
Development

Efficiently build and extend solutions for connected operation and connected product use-cases.

High Scale, High
Availability

Continue to stay ahead of market requirements for scaled-up IoT implementations.

Orchestration

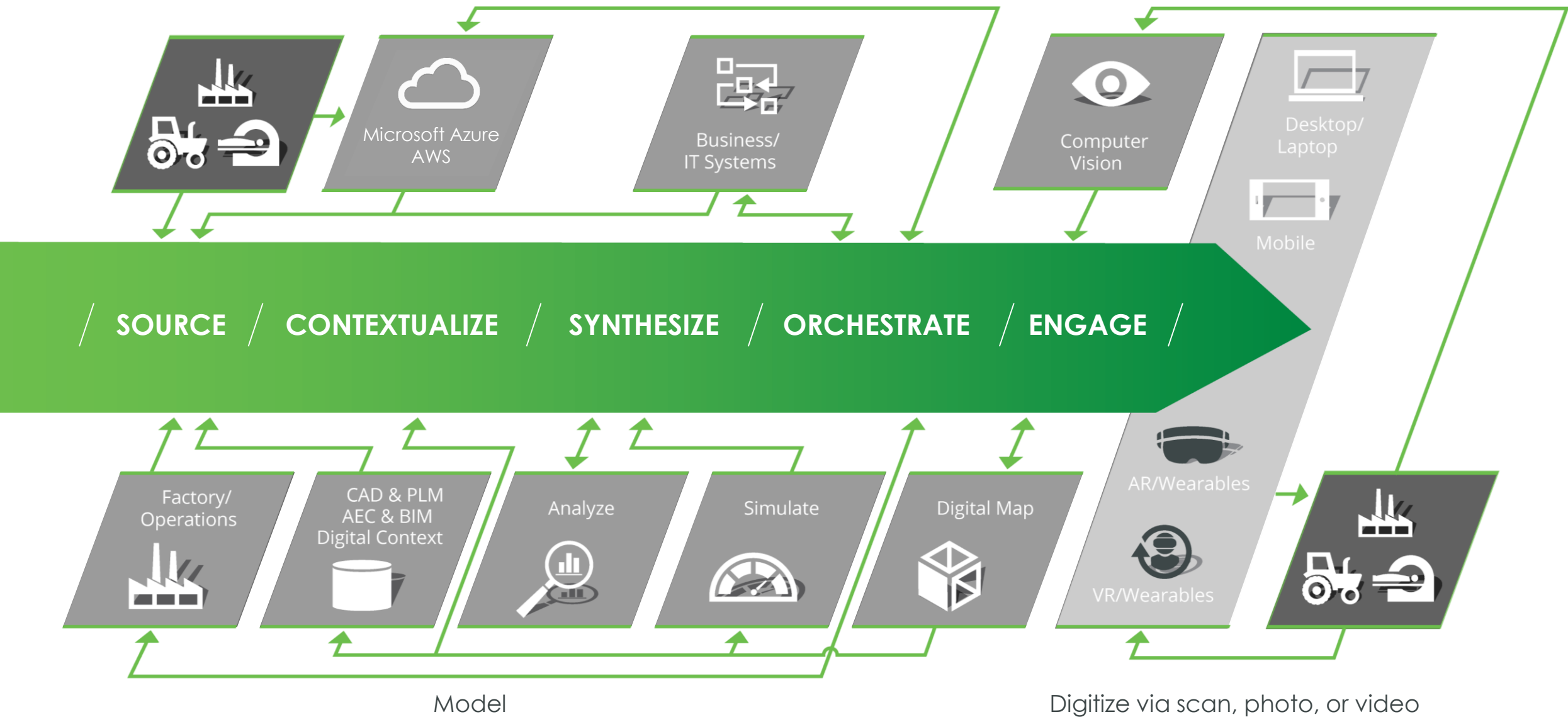
IoT-enable enterprise systems with business process automation and integration.

Microsoft Azure

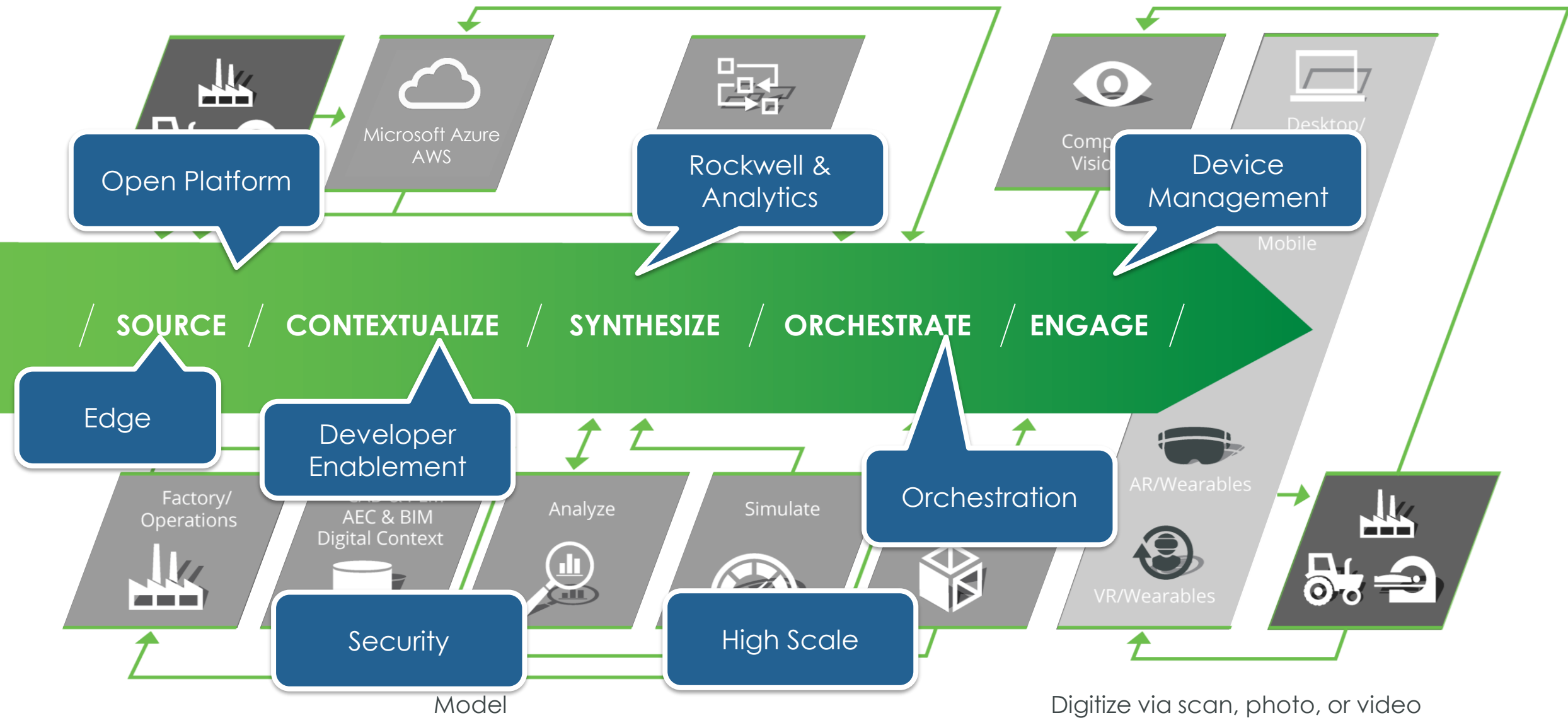
Expand the combination of Azure and ThingWorx technologies to bring market-leading capabilities.

Rockwell

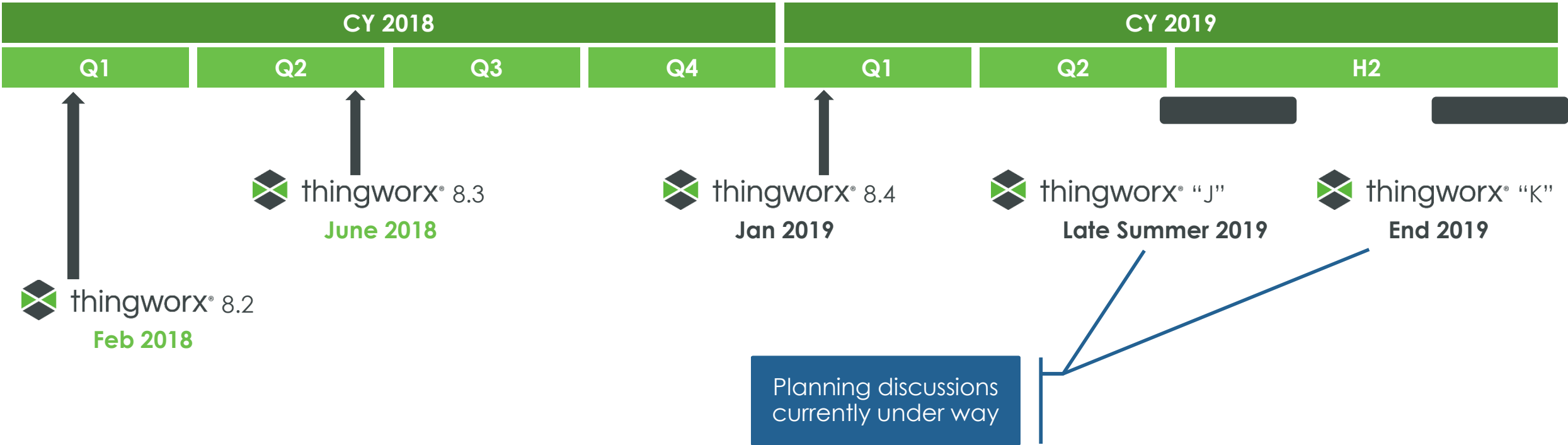
Build out the Rockwell partnership with support for FactoryTalk MES and analytics.



INDUSTRIAL INNOVATION PLATFORM



THINGWORX RELEASE CADENCE



Developer Enablement

- Developer efficiency & productivity
- Faster time-to-value
- Fast iteration with changing requirements
- Code re-use
- For citizen and professional developers

8.3

June 8 2018

Next Generation Composer

- New capability for User & Group administration, authorization and permissions
- Localized for German and French

8.4

Jan 2019

Mashup Builder

- Modern UI for all widgets
- New widgets – phase I
- Responsive layout
- Template support
- Mashups and widgets design preview
- Widgets/components SDK – phase I

“J”

Late Summer 2019

Mashup Builder

- New/Updated widgets – phase II
- Navigation & routing between mashups
- Localization enhancements
- Role based support
- Widgets/components SDK – phase II

“K”

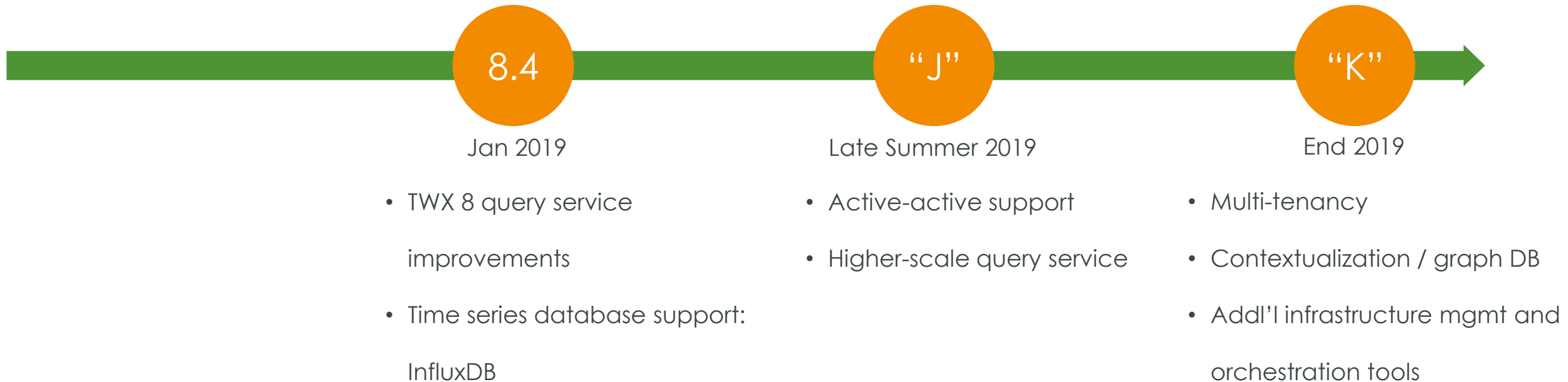
End 2019

Mashup Builder

- New/Updated widgets completion
- Debugging/Tracing improvements
- Change and version management
- Marketplace and Community ecosystem

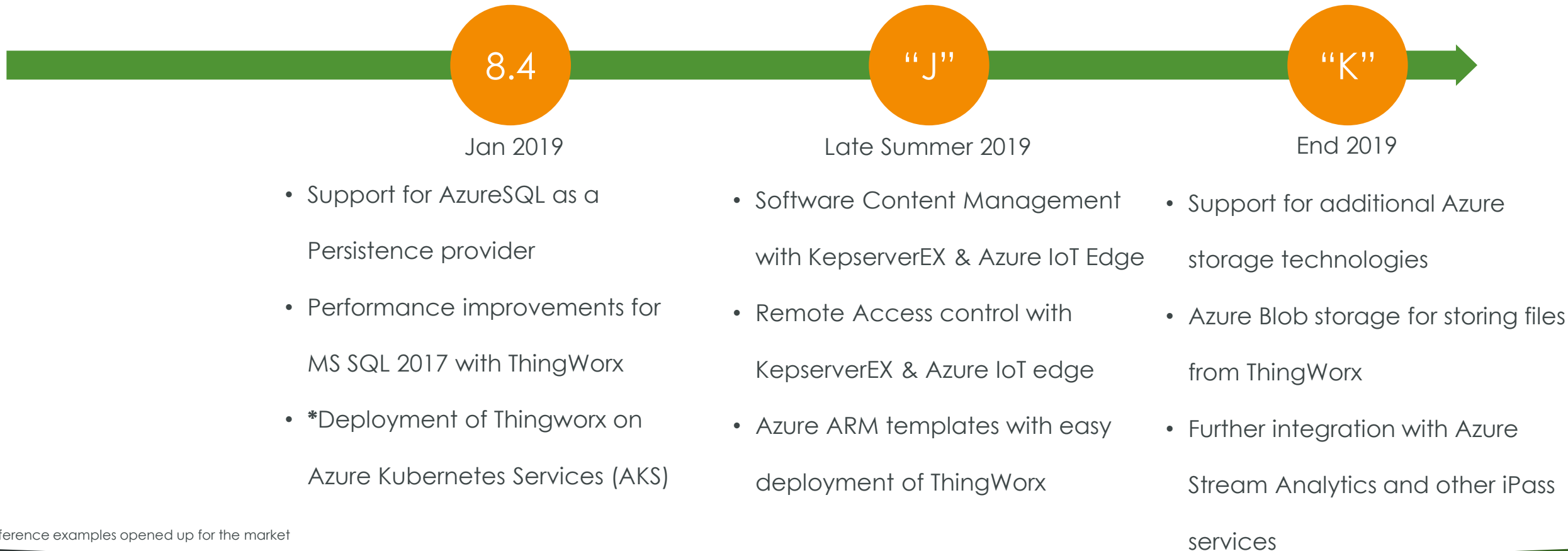
High-Scale / High-Availability

- Continued platform evolution supporting exponential projections of device growth
- Active-active support for greater reliability, easier upgrading
- Horizontal scalability



Microsoft Azure Integration

- Support deeper integration of ThingWorx with Azure Services to benefit joint PTC- Microsoft customers with easy interoperability
- Achieve cloud-like scalability and resiliency with Azure-optimized version of ThingWorx



* Reference examples opened up for the market

Orchestration

- Connect and integrate systems to extract value from enterprise data for IoT use cases
- Quickly build and modify interactions with systems & system data to create orchestrated data flows in visual, no-code environment

8.4

Jan 2019

Initial Release: Deployment options

- On-premise; PTC-managed Azure Cloud Service

Connectors

- On-premise Systems: SAP, Windchill, Integrity and more
- Cloud: Salesforce, Dynamics 365, Jira, Box, Dropbox, Twilio
- Custom connector SDK & standard-based connectors

"J"

Late Summer 2019

Connected App support

- Azure services connectors (event hub, event grid, execute service)
- Federated search and cloud to cloud and cloud to on-premise flows

Scale

- Dynamically scale flow execution with Azure Function as a service
- Automatic retry and checkpointing
- Pause and resume flows while waiting on events

"K"

End 2019

Human task support

- Define flows with integrated human tasks/mashups; system & device data flow elements

Digital Twin Support

- Enable population of digital twin models through flows
- Enable consumption of digital twin models in context of flows

Contains forward-looking information subject to change without notice. Does not imply future commitment.

Rockwell & Analytics

- Building out Rockwell FactoryTalk partnership
- Predictive modeling based on machine learning algorithms
- Real-time monitoring for improved asset performance and reliability

8.3

June 8 2018

- Out-of-box standard calculations for statistical process control
- New descriptive services to apply logic to and derive insights from streaming data

8.4

Jan 2019

- Initial integration between Thingworx Analytics + Rockwell FactoryTalk
- Analytics Upgrades to AI infrastructure (Improved transforms, metadata handling)
- "Codeless" authoring of property transforms and statistical monitoring calculations for SPC solution

"J"

Late Summer 2019

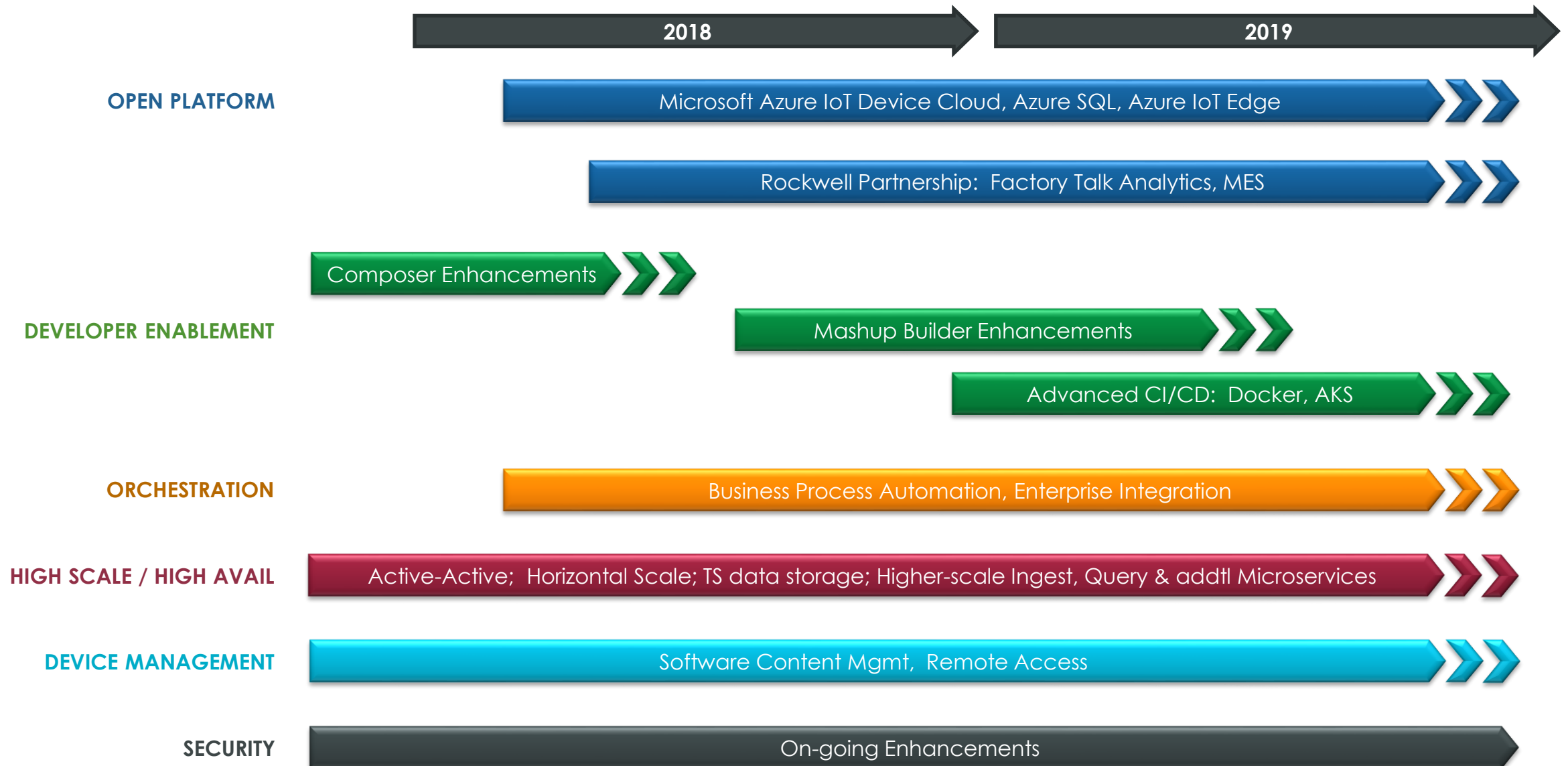
- Advanced integration between ThingWorx Analytics and Rockwell FactoryTalk Analytics
- Advanced AI integrations with our strategic partners
- Domain-specific frameworks and offerings

"K"

End 2019

- Diagnostic Analytics widgets
- Improved AI features
- Enhanced frameworks and offerings

THINGWORX PLATFORM ROADMAP



Contains forward-looking information subject to change without notice. Does not imply future commitment.

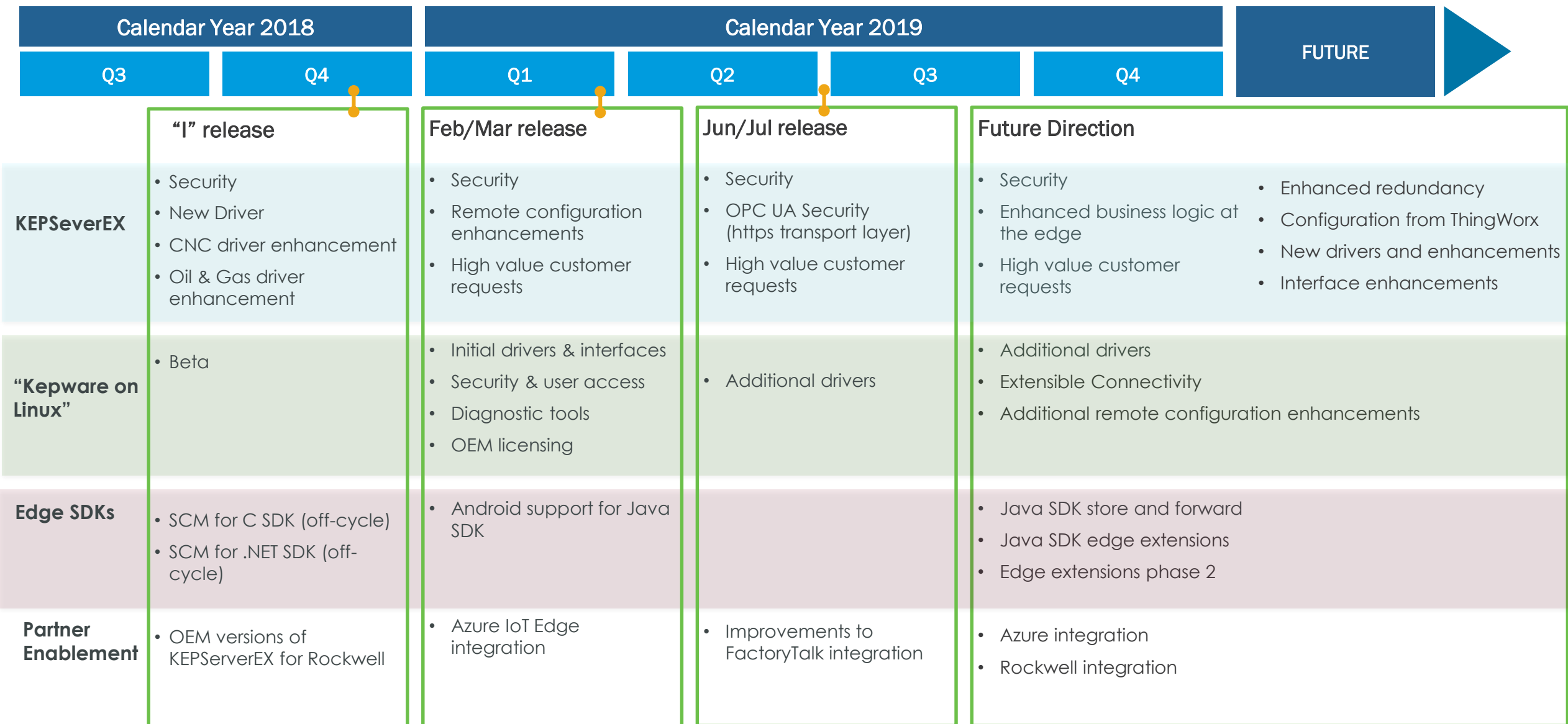
KEPWARE AND THINGWORX EDGE: A LOOK AHEAD

Tom Gaudet
Product Manager

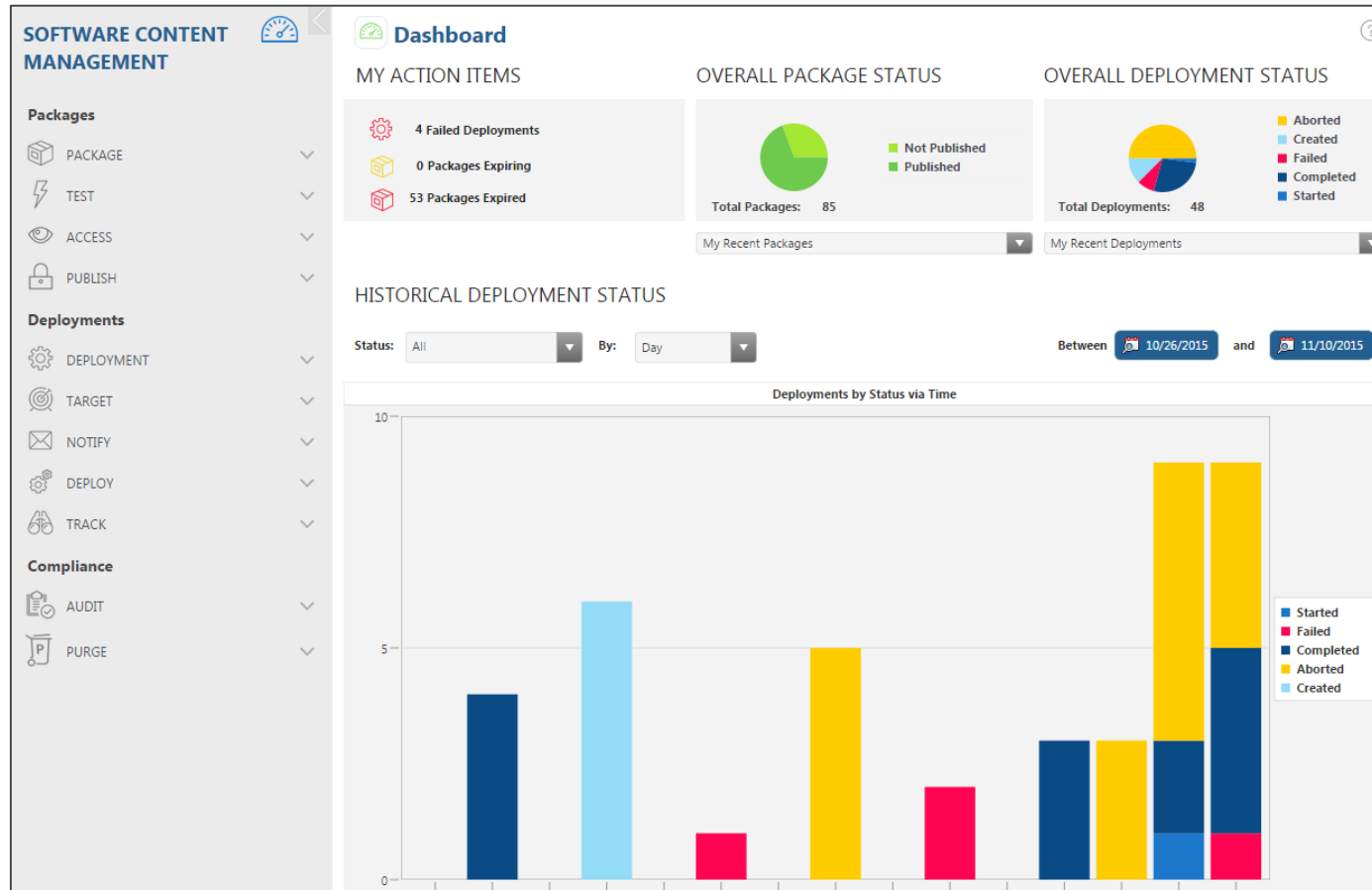


forum
europe

KEPWARE AND EDGE ROADMAP*

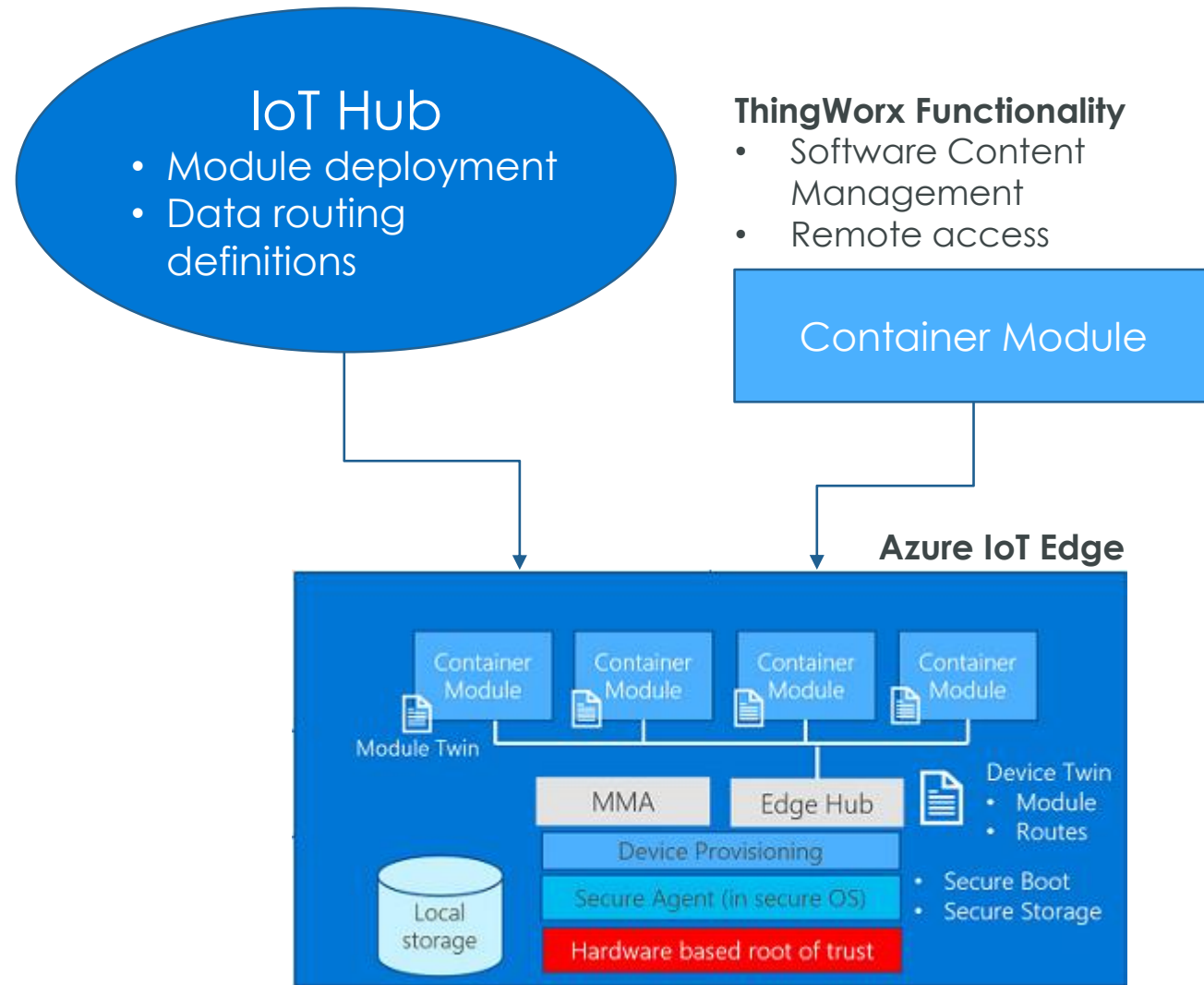


Forward looking information – Does not indicate commitment – Subject to change without notice



- Enables custom connectivity applications with SCM:
 - Content update
 - Configuration updates
 - Firmware upgrade
- Developers can now build SCM directly into their applications
- Security features built in
 - Digital signing of packages

AZURE IOT EDGE INTEGRATION

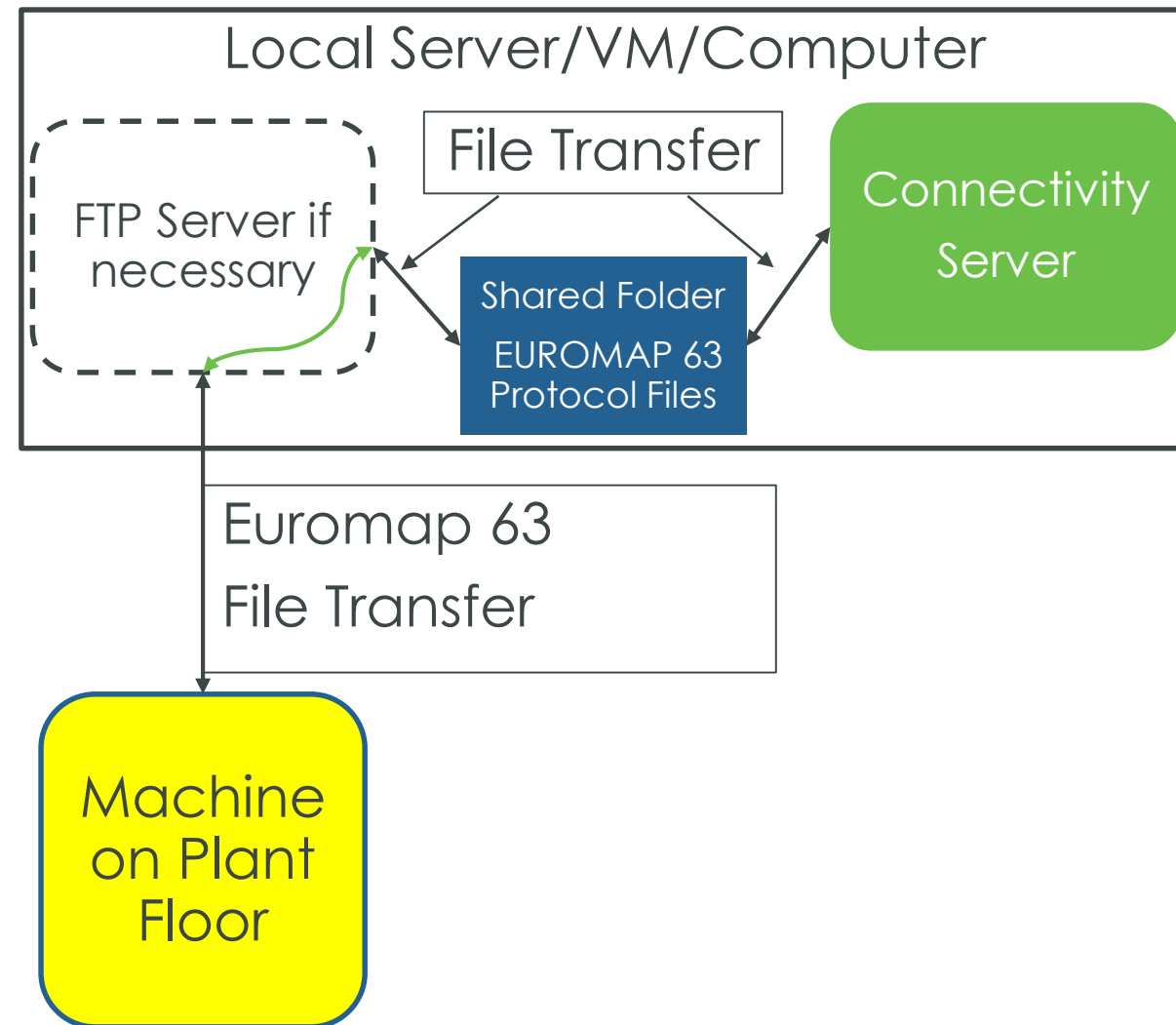
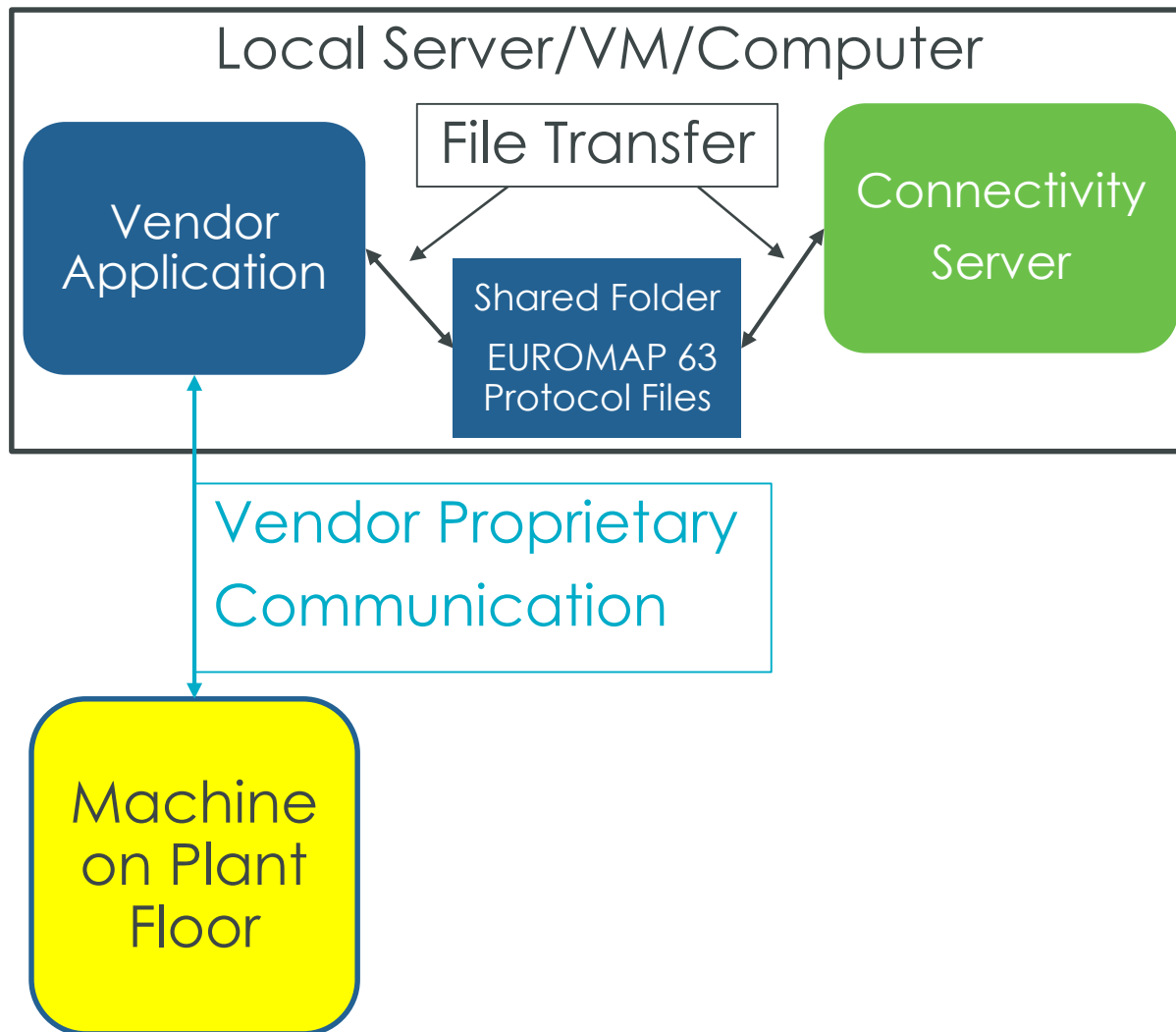


EUROMAP 63 DRIVER

- Injection molding machines are a critical piece of factory machinery
 - IMM are generally unconnected today
- First out-of-the-box connectivity in this market:
 - To date, there is no other IMM vendor-agnostic connectivity software.
- Provides personas across the enterprise visibility into IMM production



POTENTIAL EUROMAP 63 THIRD-PARTY DEPENDENCIES



****Server must have permissions to read/write/create/delete files****

OPC UA BINARY OVER HTTPS

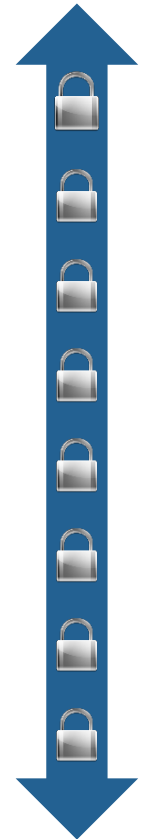
- OPC UA supports three “protocol bindings:”
 - UA binary
 - XML-SOAP (WebSocket)
 - UA binary via HTTPS
- ThingWorx Industrial Connectivity currently supports UA binary
 - Requires port 4840
 - Unfamiliar to most IT organizations
- Makes OPC UA more IT friendly

**UA binary
over HTTPS**



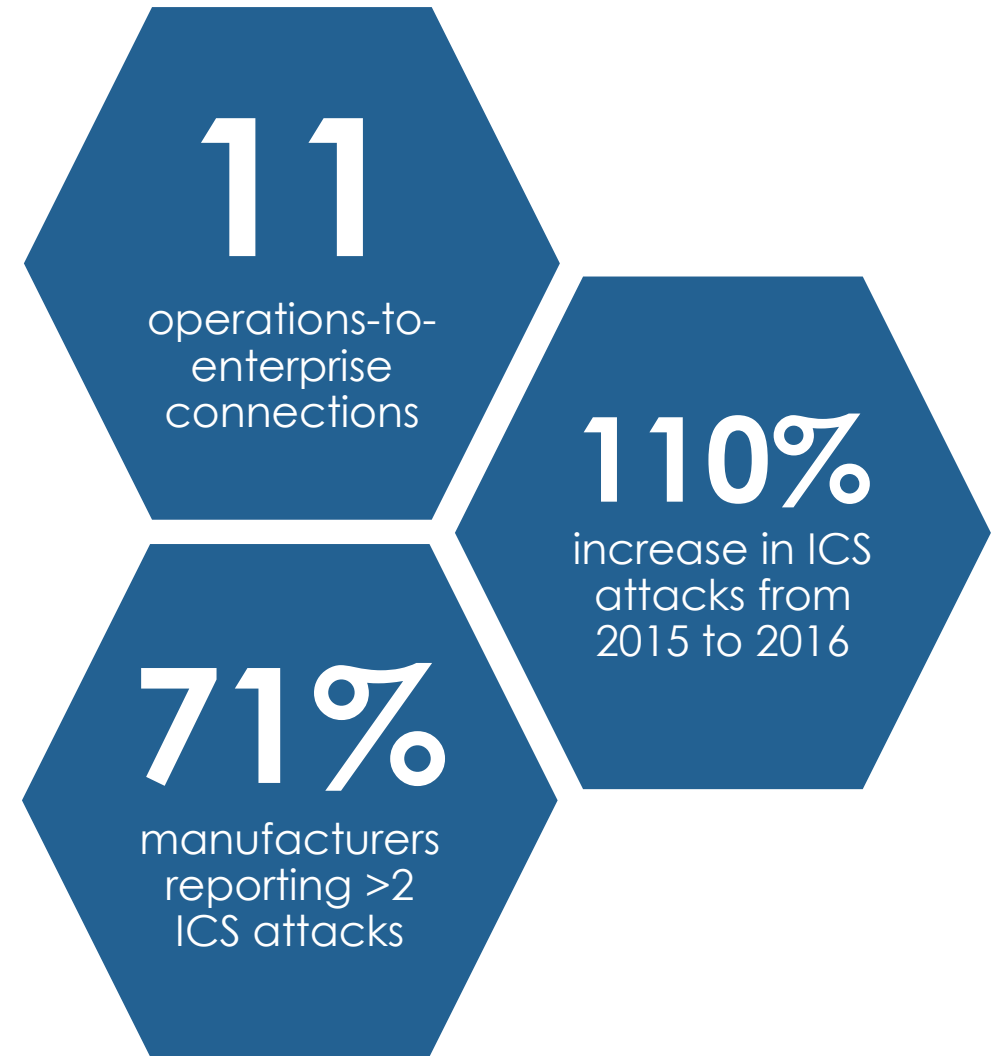
443

**UA binary
only**



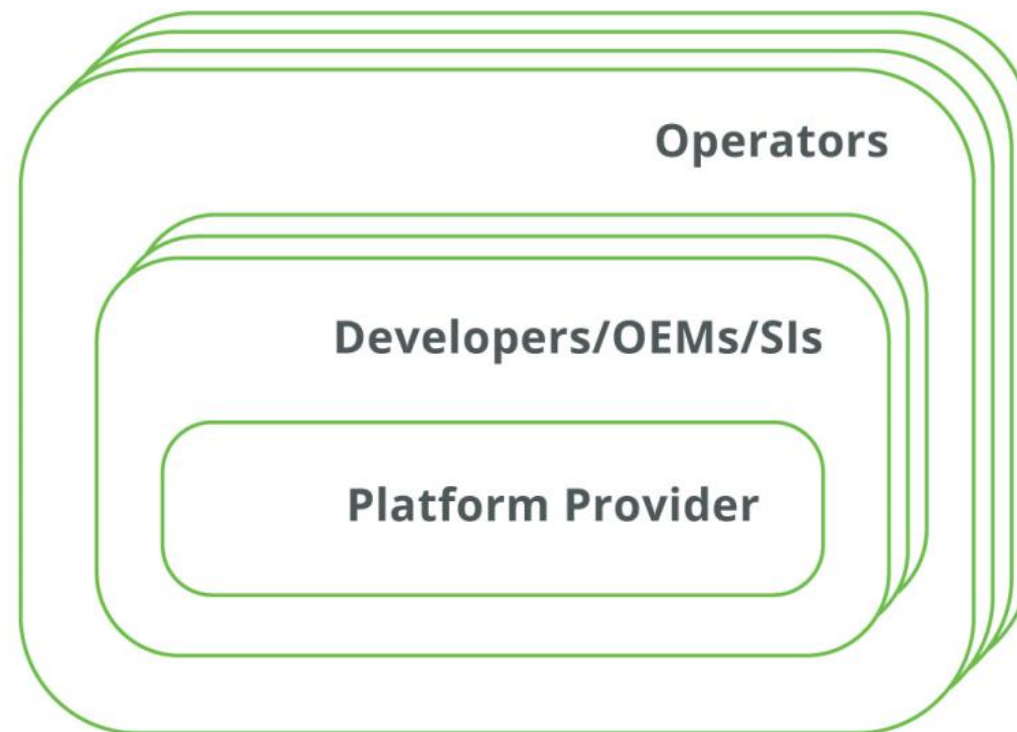
4840

- Legacy security methods:
 - Air gaps
 - Security by Obscurity



- Dedicating significant resources to security enhancements
 - 30% of some teams
- New Chief Security Officer
- Investment in Application Security Team
- Coordinated vulnerability disclosure program
- Shared responsibility whitepaper

Shared Responsibilities Stack



KEPWARE RESPONSE

- Product improvements
- Secure Deployment Guide
- Security collateral



- Critical to PTC that customers update KEPServerEX
 - Safety critical software
 - Evolving threat landscape
- Updates are critical to security
 - Security is an arms race
- Customers are increasingly adopting this mindset
- Updates to ICSs are difficult
 - Benefits outweigh the risks



ICS-CERT

INDUSTRIAL CONTROL SYSTEMS CYBER EMERGENCY RESPONSE TEAM

2.6.1 Patch and Vulnerability Management

Applying patches to ICS components presents a challenge to system administrators, because system updates and patches can interfere with the ICS function. A patch to an ICS component could change the way it works, resulting in component failure or loss of functionality. System administrators should test all patches off-line in a test environment that contains the same model and type of ICS to determine whether the patch has unintended consequences. Also, many ICSs utilize older OS versions, which the vendor may not support.

26

System designers should separate any process for applying ICS patches from the corporate patch management solution, and the application of patches to ICS should occur only during planned outages. Organizations should develop a systematic patch and vulnerability management approach for ICS and ensure that it reduces the exposure to system vulnerabilities while ensuring ongoing ICS operations.

Administrators should schedule software upgrades and patch management procedures at routine intervals. The development of procedures to incorporate security patches promptly and current software recommendations on a regular basis can substantially limit opportunities for hostile parties to target newly discovered vulnerabilities, which receive wide and immediate publicity. Organizations should institute practices to protect themselves without granting ample time for would-be intruders to apply the new knowledge against critical systems.³



ptc

DevOps & CI/CD

- Enable strong DevOps & CI/CD pipelines with improved platform support
- Reduce time to install and deploy ThingWorx for application development use cases
- Use Docker containers and Orchestrators (such as Kubernetes) to improve infrastructure management

8.3

June 8 2018

- Dockerfiles to enable building of ThingWorx docker container images
- Deployment example of Docker container images on Kubernetes using Helm charts and Docker-compose

8.4

Jan 2019

- Click and easy to install ThingWorx Foundation Installer
- Additional persistence provider such as InfluxData to support Dockerfiles
- Guidelines on developing and Deploying enterprise solutions

"J"

Late Summer 2019

- Deployment example of Docker container images on OpenShift environment

"K"

End 2019

- DevOps infrastructure for managing production deployment and advanced CI/CD

Device Management

- Expanding Software updating capabilities for improved asset performance and security
- More secure and flexible Remote Access and Control
- Increased visibility and control of remote activity for end users

8.3

June 8 2018

- SW content mgmt enhancements:
 - instruction-based packages

8.4

Jan 2019

- Remote access enhancements:
 - New secure tunnel
 - Remote Desktop via VNC/RDP
 - Remote access via ssh & http
 - multi-session mgmt

"J"

Late Summer 2019

- SW content mgmt enhancements:
 - property dependencies,
 - complex instruction set
- ThingWorx Global Access Server

"K"

End 2019

- SW content mgmt enhancements:
 - auto deployment
 - scale refactoring
- ThingWorx Policy Server
- Remote access:
 - session recording, auditing

PTC PORTFOLIO TO ENABLE INDUSTRIAL INNOVATION

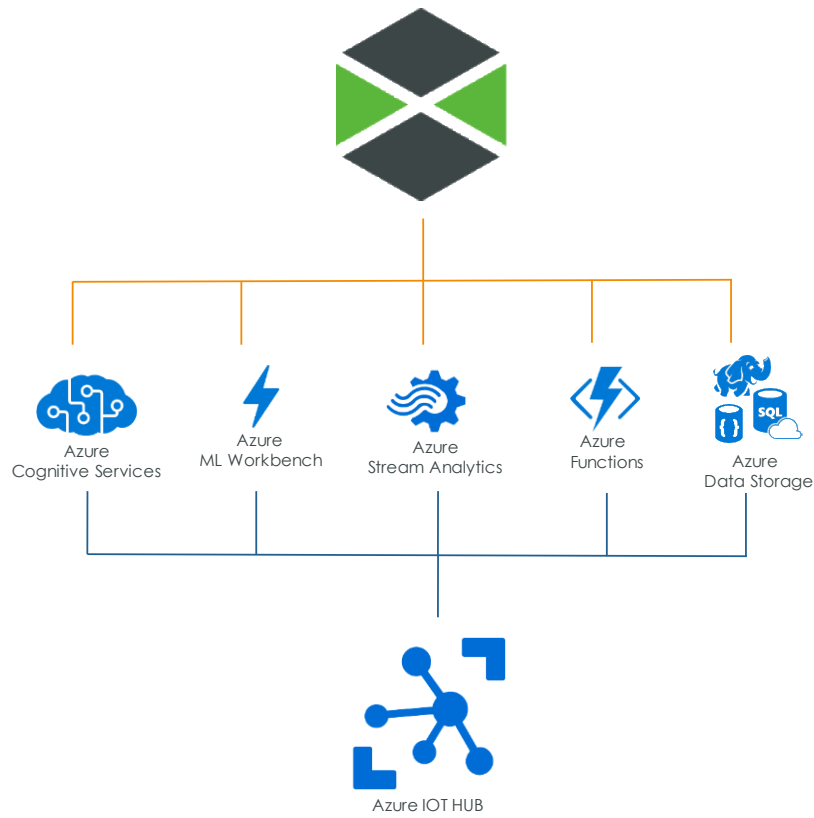


PARTNER SOLUTIONS	<div> Microsoft</div> <div> Rockwell Automation</div> <div> ANSYS</div> <div> Deloitte Digital</div> <div> Capgemini</div> <div> McKinsey & Company</div> <div> accenture</div> <div> Hewlett Packard Enterprise</div> <div> InVMA</div> <div> Vodafone</div>
SOLUTIONS	<div> thingworx[®] asset advisor</div> <div> thingworx[®] navigate[™]</div> <div> thingworx[®] production advisor</div>
INDUSTRIAL INNOVATION PLATFORM	<div> thingworx[®]</div> <div> kepware[®]</div> <div> vuforia[™]</div>
PRODUCT LIFECYCLE MANAGEMENT	<div> creo[®]</div> <div> windchill[®]</div> <div> integrity[™]</div> <div> servigistics[®]</div>

CLOUD | HYBRID | ON-PREM

PTC + MICROSOFT ROADMAP

Bringing intelligent cloud, intelligent edge, and AI to manufacturer's critical workflows



Market Ready

IoT Hub Connector 2.0
Support telemetry and events, device twin

ThingWorx on Azure
Deployment of ThingWorx solutions on Azure cloud with **Azure PostgreSQL**

Kepware → IoT Hub
Kepware industrial connectivity connected to IoT Hub

Vuforia Studio for HoloLens
Advanced mixed-reality for enterprise users

Azure AI / PaaS Recipes
API – API integration with Azure serverless compute features e.g. Functions and ASA

Near Term

IoT Hub Connector 3.0
Advanced content management and remote access through IoT Hub, jobs

IoT Edge Integration
SCM, RAC, and Kepware as Edge Container Modules

AzureSQL Integration
Metadata and configuration data in AzureSQL

Time Series Insights
Access TSI data from ThingWorx and inclusion of TSI widgets in solution UIs

Windchill on Azure
PLM solution to support deployment on Azure Azure with **AzureSQL**

Future

Azure-as-Core
Optimize ThingWorx on core Azure PaaS services: Event Grid, AKS, etc.

Native Serverless
Automatically configure Functions, ASA jobs, and utilization of cognitive services through ThingWorx applications

Plug and Play
Metadata and configuration data in AzureSQL

Digital Twin
feed the Digital Twin with the relevant product data and use the DT to power complete solutions for product manufacturers

AI for PLM
Decorating product design data with semantic links and knowledge graph for intelligent recommendations and insights

Optimized MR Rendering
Utilizing GPU streaming and Spatial Graph to deliver rich CAD models in the context of MR experiences

MR + AI / Cognitive
Weaving AI into the MR experience for enterprise use cases. LNP, Knowledge,

CAD rendering Cloud
Utilizing the elastic compute of the cloud to drive advanced rendering, FAE and simulation

CDM for Manufacturers
Collaborate on a CDM for manufacturing data and content to semantically link to relevant IoT and enterprise data, through ODI

Blockchain for Mfg.
Tracking lifecycle events across a distributed value chain

Target general availability: Q1 2019

Primary investments:

1. Developer Enablement
 - Mashup Builder Phase 1 enhancements
2. Open Platform
 - Microsoft Azure SQL support
3. Scalability
 - High-scale query microservice
4. Orchestration
 - Initial release
5. Device Management
 - Remote Access: additional tunneling support
6. Axeda
 - eMessage and IDM connector updates
7. Analytics
 - Statistical process control
8. On-going investment
 - Security
 - Install
 - Documentation

THINGWORX “J” PLATFORM INVESTMENT THEMES



Target GA: TBD

- Continue **security** investment
- Continue **Mashup Builder** improvements to address product shortcomings and improve the developer experience
- Deliver **Microsoft** partnership co-sell enablers: Azure SQL, CosmosDB, Azure IoT Edge, Azure IoT Hub
- Deliver platform capabilities for **enterprise deployment** for efficient multi-site factory implementations
- Continue investment in **high-availability and high-scale** capabilities to meet increasing market requirements for large-enterprise implementations
- Deliver **remote access** and **software content management** enhancements to support Axeda customer transition to ThingWorx
- Deliver **install** improvements with common installer and user friendly front-end

Contains forward-looking information subject to change without notice. Does not imply future commitment.

Orchestration

- Connect and integrate systems to extract value from enterprise data for IoT use cases
- Enable broad set of skill levels to quickly build, modify and repurpose interactions with systems & system data to create orchestrated data flows in visual, no-code environment

