

# THINGWORX NAVIGATE STRATEGY & ROADMAP

Graham Birch  
Director, Product Management

November 2018



forum  
europe



## AGENDA

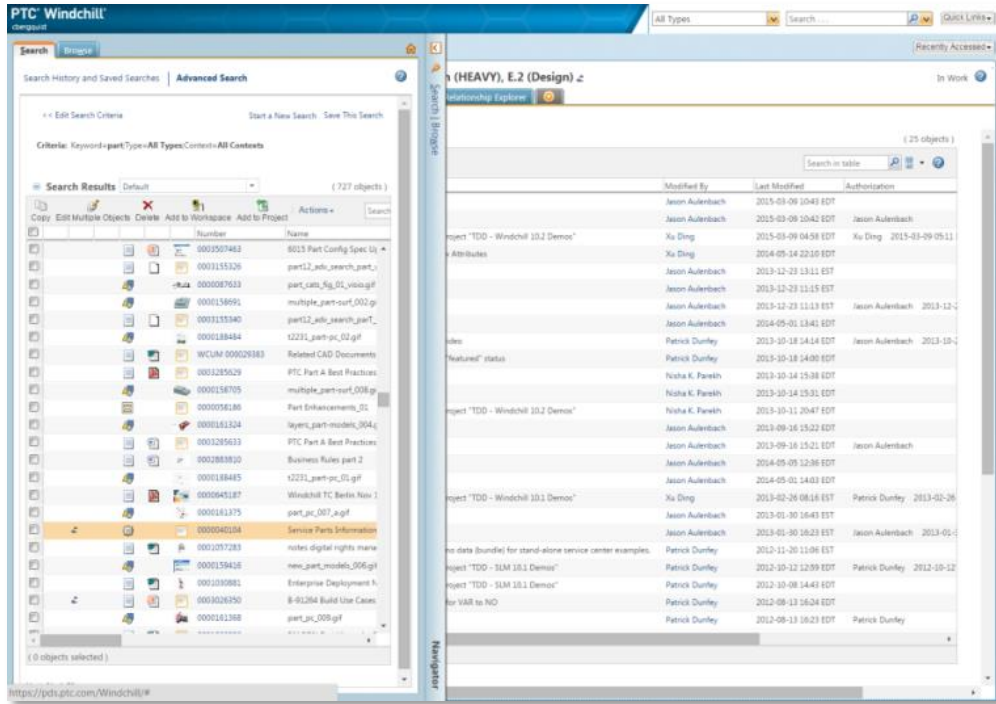
- Introducing ThinkWorx Navigate
- Roadmap: Recent Releases
- Example Partner Apps
- Roadmap: What's Next
- Getting Started

VIDEO 1 GOES HERE

# CURRENT SITUATION & CUSTOMER CHALLENGE



- Enterprise systems are **too complex for many roles** to get information themselves
- Even with in-depth training, infrequent **users forget how to get information**
- A single application **does not include all information needed** by role for a task



Designer/Engineer

Request product  
info



Tooling Designer



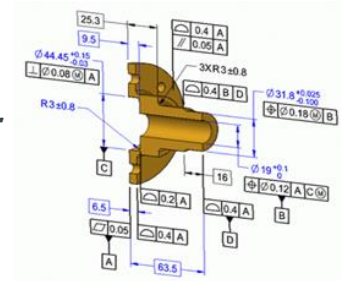
Purchasing Agent



Quality Inspector



Shop Floor Worker



- Expert users become **bottleneck** for getting product information
- Expert users are **distracted and burdened by requests** from many roles
- Enterprise interfaces can be customized but it is **often costly to create and maintain these customizations**

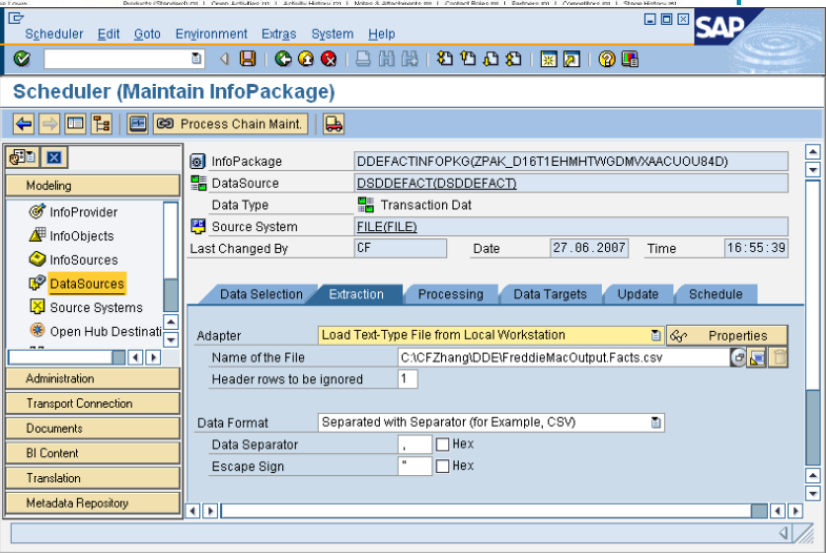
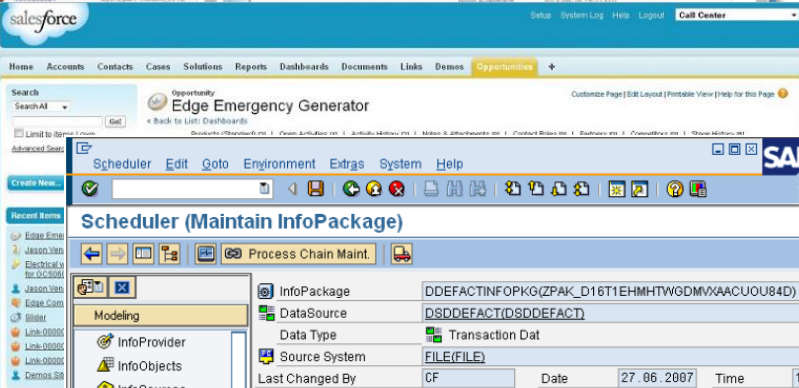
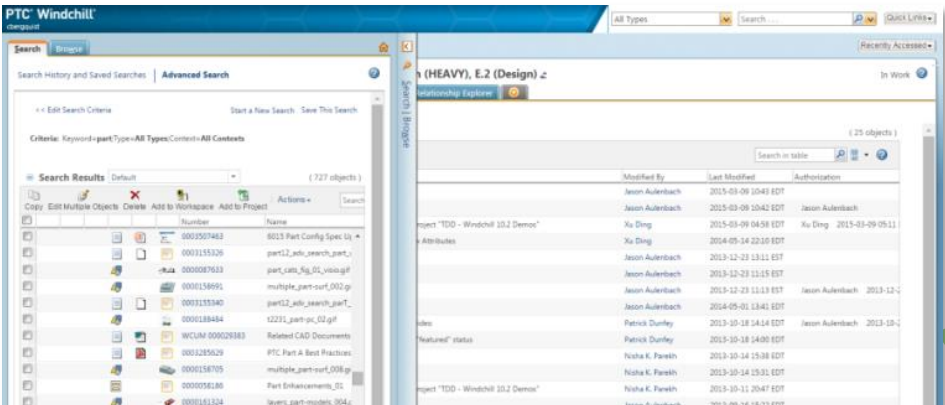
# THINGWORX NAVIGATE SOLUTION




Deliver just what is needed in role-based experience for self-serve access to product information by any role



Designer Engineer





View Drawing




Tooling Designer



View Design Files




Purchasing Agent



View Document



Quality Inspector



View Part Structure



Shop Floor Worker

ThingWorx Navigate Role-based Apps

Benefits

- ✓ No Windchill upgrade or system rip and replace
- ✓ Easy to deploy and adopt
- ✓ Ready out of the box
- ✓ Simple tailoring
- ✓ Reduce errors, increase efficiency, reduce costs

**Purpose Built**

- ✓ For a role...
- ✓ To complete a task

**Just the information needed**

- ✓ From all the owning systems
- ✓ Aggregated together

**Easy to consume**

- ✓ On the device that is convenient
- ✓ With no need for training



Production Role




Purchasing Role


thingworx navigate™ View Part Structure Administrator

Back To Search

**PART DETAILS**

 **Number** 0000000329  
**Name** 32053047phl\_a0007n23...  
**Version** A.3 (Design)  
**State** In Work  
[View in Windchill](#)

**SELECTED PART**

 **Number** 0000000367  
**Name** housing Assy\_Rh\_abutment\_...  
**Version** A.3 (Design)  
**State** In Work  
[View in Windchill](#)

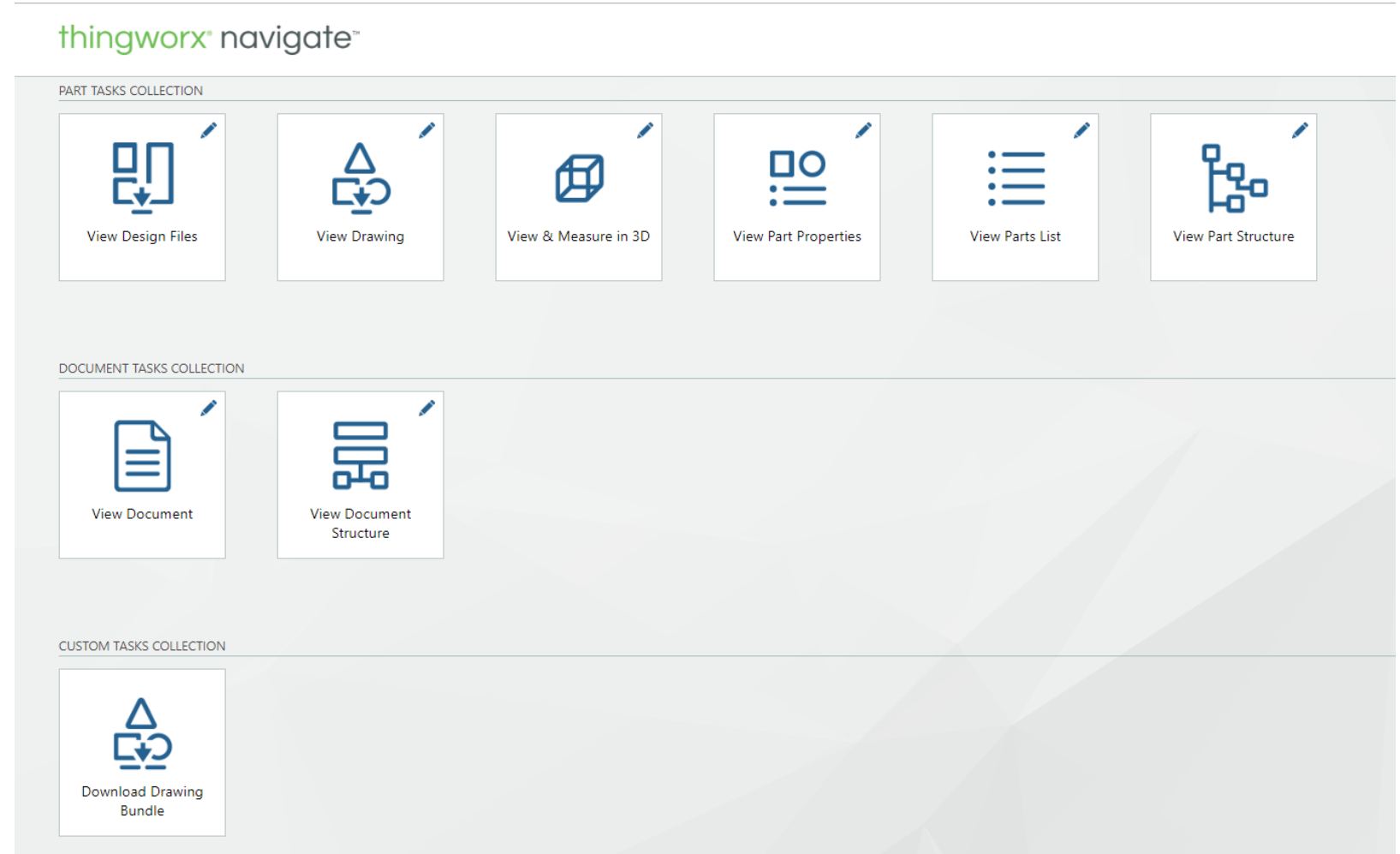
**PART STRUCTURE**

Number	Name	Quantity	Unit	State	Version
0000000329	32053047phl_a0007n23			In Work	A.3 (Design)
0000000311	a0007n2333.asm	1	each	In Work	A.3 (Design)
0000000400	brake_pad_ob_washer_p1		each	In Work	A.3 (Design)
0000000066	bracket Assy_Rh_bracket1		each	In Work	A.3 (Design)
0000000158	housing Assy_Rh_screw_1		each	In Work	A.3 (Design)
0000000317	brake_pad_ob_pad Assy1		each	In Work	A.3 (Design)
0000000447	housing Assy_Rh_abutmt1		each	In Work	A.3 (Design)
0000000289	housing Assy_Rh_housin1		each	In Work	A.3 (Design)
0000000163	housing Assy_Rh_seal_lg1		each	In Work	A.3 (Design)
0000000081	guide_bolt_1_partbody_1		each	In Work	A.3 (Design)
0000000183	housing Assy_Rh_bleed_1		each	In Work	A.3 (Design)
0000000216	brake_pad_ob_pad Assy1		each	In Work	A.3 (Design)
0000000290	brake_pad_ob_pad Assy1		each	In Work	A.3 (Design)
0000000245	bracket Assy_Rh_exclude1		each	In Work	A.3 (Design)
0000000315	brake_pad_ob_rivet_par1		each	In Work	A.3 (Design)
0000000327	brake_pad_ob_washer.p1		each	In Work	A.3 (Design)
0000000145	housing Assy_Rh_actuat1		each	In Work	A.3 (Design)
0000000242	bracket Assy_Rh_outide t1		each	In Work	A.3 (Design)



## Capabilities

- View Drawing
- View & measure in 3-D
- View Part Properties
- View Parts List
- View Part Structure
- View Document
- View Document Structure
- View/Download design files
- Download Drawing Bundle



# DEMONSTRATION: VIEW PART STRUCTURE

Video 2 Goes Here



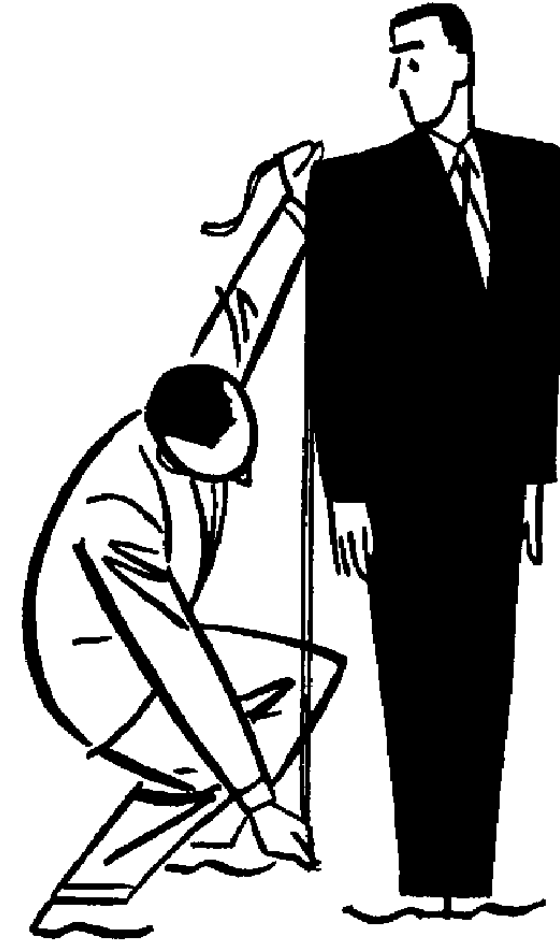
# DEMONSTRATION: VIEW DRAWING

Video 3 goes here



## AGENDA

# TAILORING



Select role

Select role to tailor

Manufacturing

Set Limits

Max search results

1 50 1000

Max recent searches

1 5 20

Select up to 5 attributes to show in the search results

Available attributes

Address  
ADW Block Library Path  
ADW Flow Type  
ADW Managed Design  
ADW Metadata Version  
ADW Root Design  
ADW Type  
All Security Labels value

Double-click an attribute to add it

Selected attributes (5/5)

Number  
Name  
Version  
State  
Last Modified

Double-click to remove

Display Windchill navigation link?

Yes

No

Set Search Options

Object type to find

Part

CAD Document

Part & CAD Document

Show partial matches?

Yes

No

Attributes to search

Number

Name

Number or Name

Tasks to show the users in this role



Save

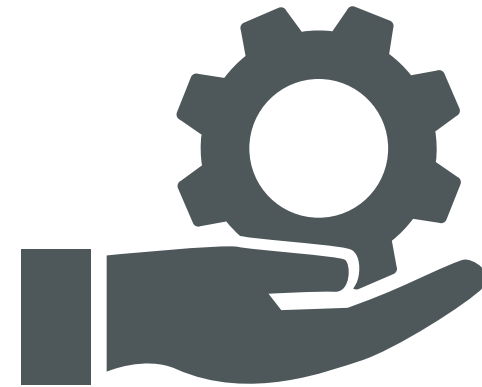
Cancel

Choose Tasks



AGENDA

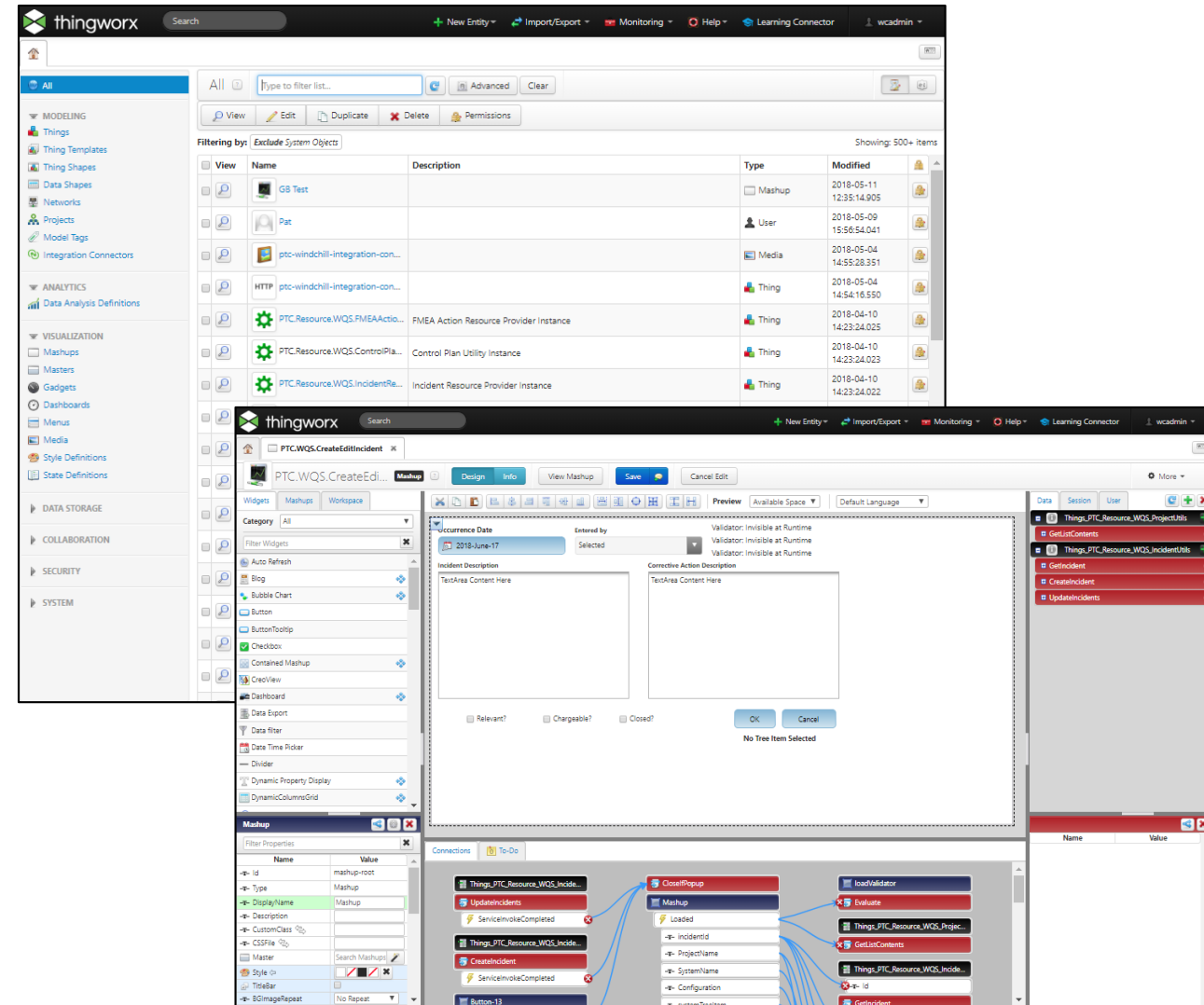
# CUSTOMIZING



# CUSTOMIZING THINGWORX NAVIGATE



- Navigate ADK
  - View
  - Author
  - Grants Access to ThingWorx platform
    - Composer
    - Mashup builder
- Connectors
  - Windchill
    - REST Easy
    - ODATA
- Extend Existing or Build Completely New Mashups



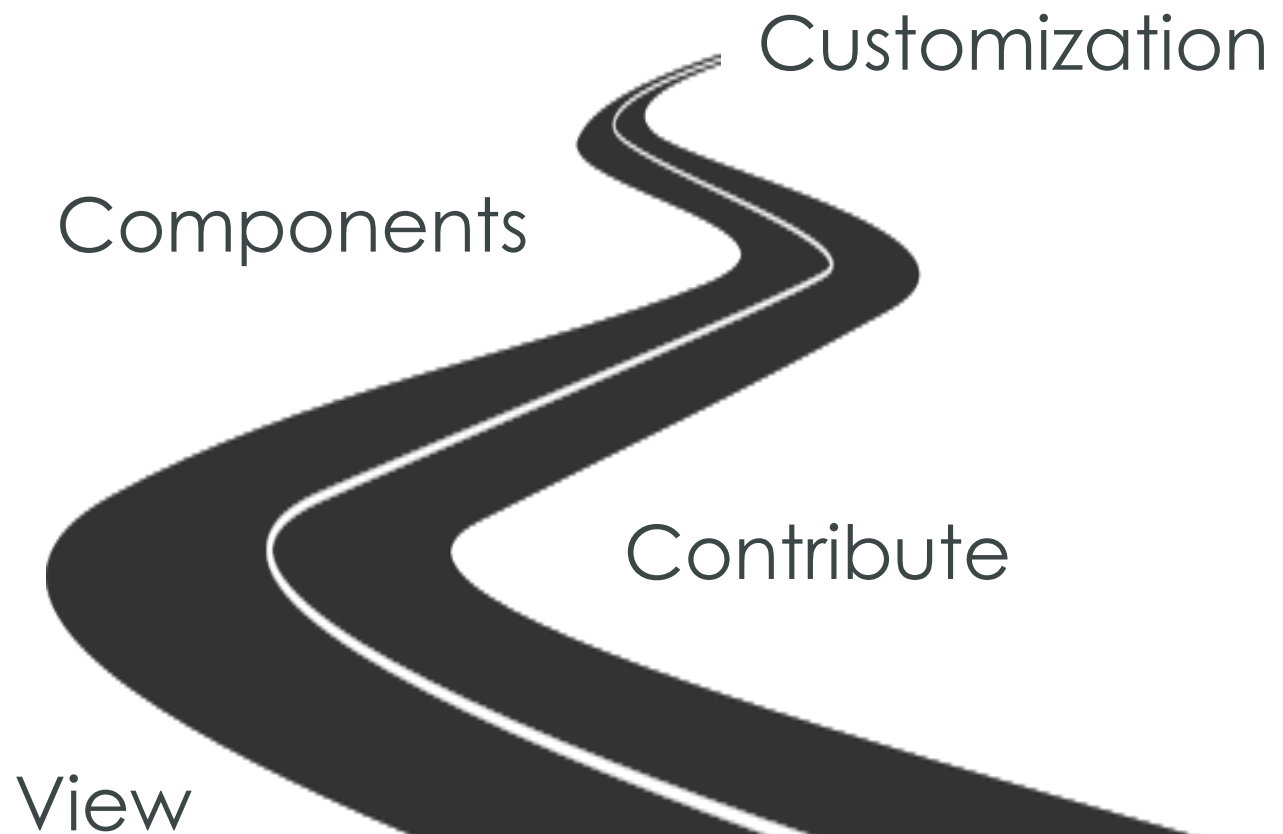
# EXAMPLE OF CUSTOMIZATION: POLARIS

- Video 4 goes here

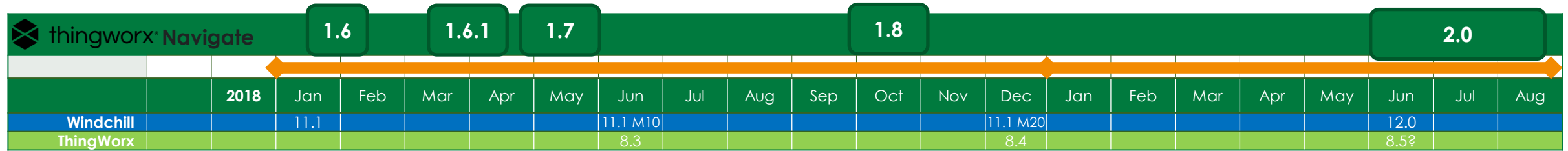


## AGENDA

# ROADMAP



# THINGWORX NAVIGATE PRIORITIES & ROADMAP



## 2019 Priorities (Navigate 2.0)

### Navigate Contribute

Enable the user to review and respond to assigned Change Request Review & Approval tasks

### Navigate ADK

Introduce Rapid App Development through Component Based Construction

### Navigate Installer

Enable upgrade of an existing Navigate installation

## 2019+

### Navigate Apps

Additional Navigate Contribute Apps  
(Problem Report/non-conformance, document Management)  
Update to existing View Apps

### Navigate ADK

Enhance Rapid App Development with introduction of additional components

### Multi-System

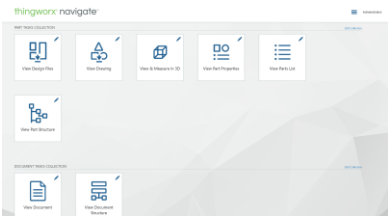
Replace multi-system connectivity with ThingWorx orchestrate



# THINGWORX NAVIGATE – RELEASES & ROADMAP OUTLINE



## View – 1.5 June 26, 2017



- ThingWorx 8.0 support
- License Management (Named User)
- 3-D WebGL Viewer
- Single signon (SSO)
- View/navigate document structures
- Download all drawings/files for assembly
- New integration framework & SAP connector

## View – 1.6 January 2018

- Authentication options (SSO/non-SSO)
- Performance
- In-place upgrade
- Export to spreadsheet
- Usability and styling improvements
- ADU License management
- Support for MSSQL database

## View – 1.7 April 2018

- ThingWorx Platform Update
  - ThingWorx 8.2

## View – 1.8 Oct. 2018

- Focus on User Experience
  - Installability
  - Upgradability
  - Maintainability
  - Usability



## View/Contribute – Mid'19

- Contribute App
  - Review & approve Change Request
- Continue User Experience
  - Upgradability
  - Usability



## View/Contribute – 2019+

- Markup
- Attach/edit document
- Create problem Report
- Complete general task
- Create deviation/waiver/nonconformance
- Navigate Portal Service (SaaS)
- View Where Used

# THINGWORX NAVIGATE 1.8 – THE “ILITIES” RELEASE



## • “Installability”



- Provide a seamless experience for ThingWorx & ThingWorx Navigate installation
  - Single download for Navigate install
  - Deploy ThingWorx platform & ThingWorx Navigate along with underlying technologies (Tomcat, etc.)
  - Validate Windchill connection during installation
  - Improved Documentation

## • Upgradability

- Upgrade preparation tools (API changes detection script)
- Support Migrate



## • Compatability

- Windchill 11.1 M010, 11.1 F000, 11.0 M030
- ThingWorx 8.3.3



## • Maintainability



- Custom Navigate Banner
- Making ThingWorx & Windchill better together
  - Windchill Clustering
  - Connecting to Multiple WC Systems
- Support I\*E from ODATA connector

## • Usability

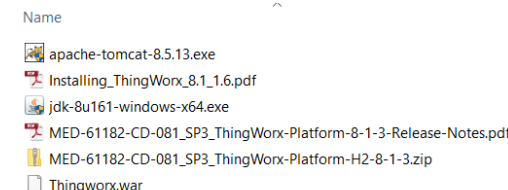
- Improved Product Documentation
- Search performance improvements
- Improved List Shuttle Widget
- Cross selection highlight Tree Structure & WebGL Viewer



# PRODUCT INSTALLER

- Fresh installs only in 1.8
  - Upgrades planned for 2.0
- Required components are pre-packaged & auto deployed
  - Exact versions will be pre-packaged
  - No need to search for multiple downloads
- Installs ThingWorx & Navigate
  - Tomcat server automatically installed
- Configure connection to Windchill
  - Fixed Authentication, Windchill Authentication, Single Sign On via connection to PingFederate
  - Realtime connection validation for quick troubleshooting

## From This



Name

- apache-tomcat-8.5.13.exe
- Installing\_ThingWorx\_8.1.1.6.pdf
- jdk-8u161-windows-x64.exe
- MED-61182-CD-081\_SP3\_ThingWorx-Platform-8-1-3-Release-Notes.pdf
- MED-61182-CD-081\_SP3\_ThingWorx-Platform-H2-8-1-3.zip
- Thingworx.war

- 8 downloads
- Multiple documents
- Dozens of pages
- Hundreds of clicks
- Days to complete

- Oracle
- Apache
- Deployment
- Setup
- Import Thingworx Utilities files
- Import Windchill Extension files
- Import PTC sample mashup
- Install Windchill Patch
- Import PTC Navigate Framework Extension files
- Import PTC NAVIGATE VIEW PLM APPS Extension Bundle files
- Import PTC NAVIGATE Example files
- Navigate and Windchill Configuration

## To This



Download



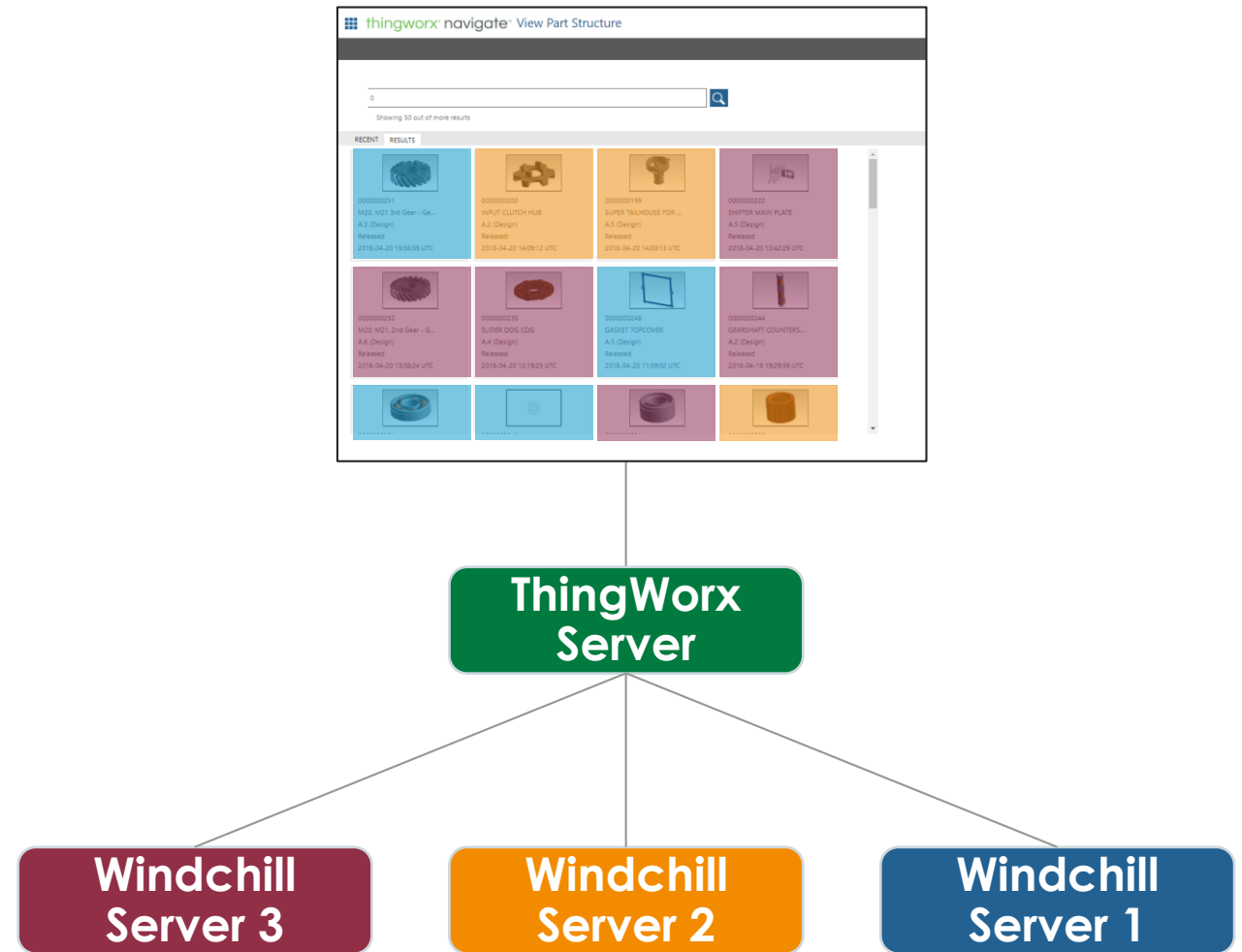
Install



1 Hour to complete

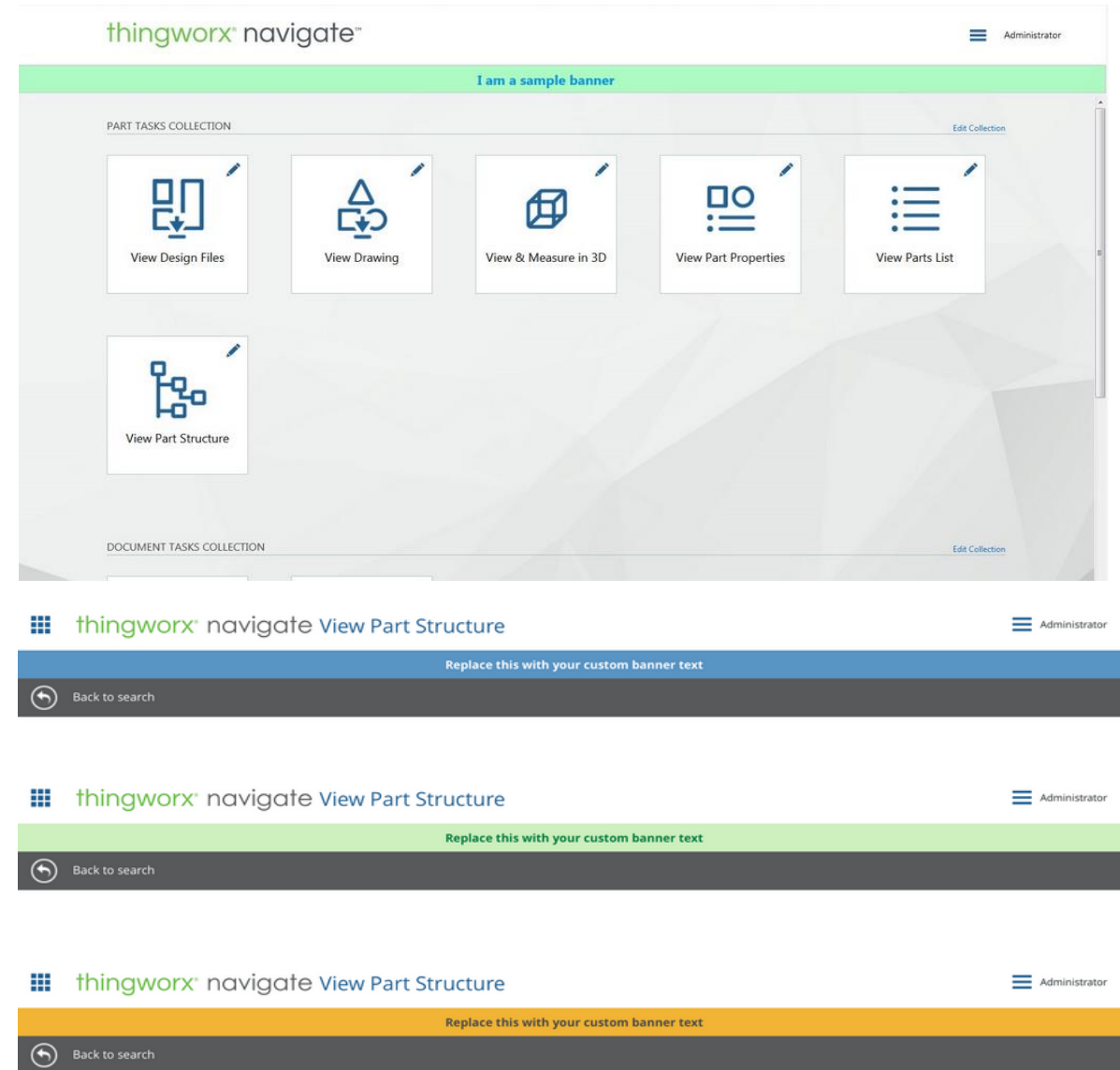
# NAVIGATE 1.8: MULTI-WINDCHILL ORCHESTRATION

- The customer configures one or more Windchill servers.
- When the user initiates a search from one of the View Apps the search is executed against all systems simultaneously
- The search results are assembled on the TWX server & presented back to the user.
- Search results will indicate which server that result came from
- When the user selects one of the search results that request goes directly to the specific server
- Download Drawing bundle is not supported.



# CUSTOM NAVIGATE BANNER

- Ability to plug in a custom banner
- Supported on all Navigate UIs
- Upgrade-safe
- Easily add/remove/change banner
- Sample banner is included





## AGENDA

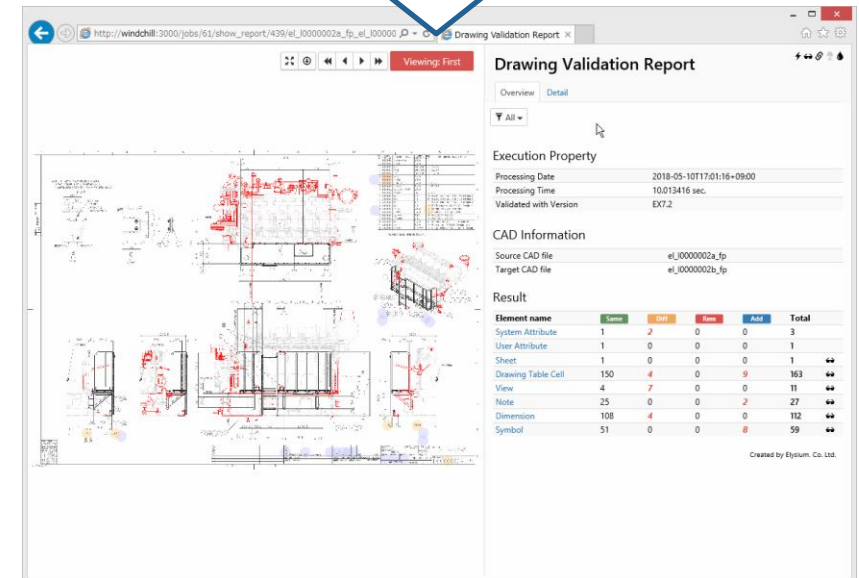
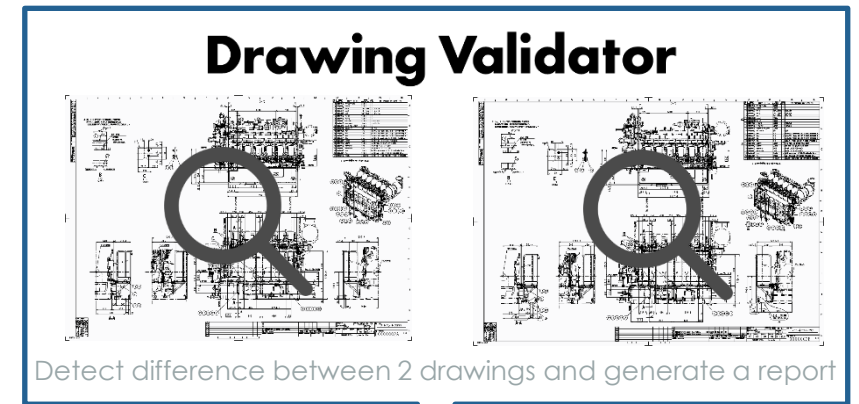
## PARTNER EXAMPLES



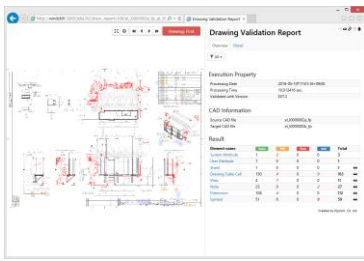
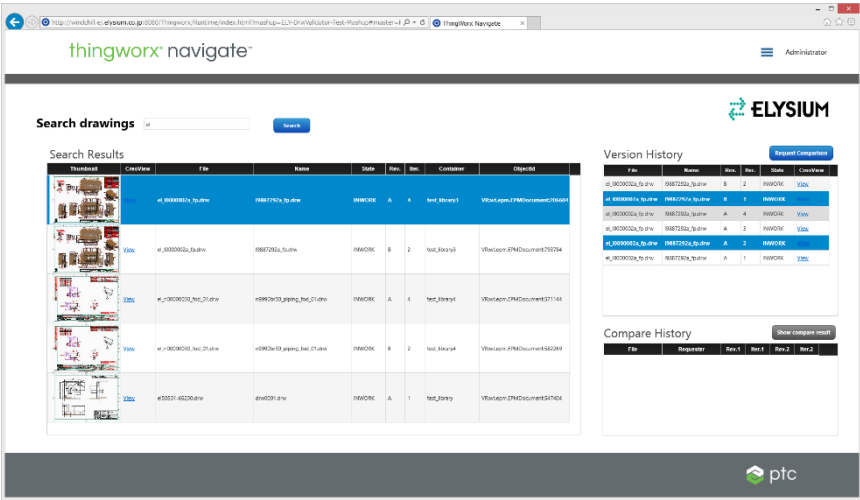
Kentaro Fukuta

**Capture engineering changes efficiently  
and eliminate chance of oversight**

- ✓ Validation based on semantic/graphic information from native CAD Models
- ✓ User-friendly report
- ✓ HTML reports viewable on Web browsers



## ThingWorx Navigate mashup to search drawing data managed on Windchill and launch Drawing Validator



Drawing Validation Report

Drawing Validator on ThingWorx Navigate



Video 5 goes here

Mike Betz



## FACTON Enterprise Product Costing

- FACTON EPC – an enterprise standard software which enables producers of complex products to calculate product costs across the organization, both on premise and in the cloud
- Focus industries of FACTON are automotive, aerospace, mechanical engineering and electronics. Global footprint with more than 100 customers like Ford, JaguarLandRover, Siemens, Airbus, TE Connectivity, Mahle Behr and Dyson

## Facts and Figures

- |                       |                  |
|-----------------------|------------------|
| Founded:              | 1998             |
| Global HQ:            | Potsdam, Germany |
| North America HQ:     | Troy, MI         |
| Employees:            | ~90              |
| Software Development: | Germany          |
| Customers:            | > 100            |
| Partners:             | > 15             |
| Main Investor:        | Hasso Plattner   |

Video 6 goes here



# ANARK CORPORATION OVERVIEW



**Leading provider of automated technical content publishing and visual collaboration software and solutions**

**Empowering the MBE and Digital Thread revolution** within Aerospace, Defense, Automotive, Energy, Industrial, Electronics, and Medical Equipment Sectors

**Enables manufacturers** to easily transform critical PLM & ERP data into powerful, role-and-use-case-specific 3D PDF documents and HTML5 web content that can be consumed on virtually any device

**Long-standing PTC partner** with strong shared customer base of Windchill, Creo, & ThingWorx users

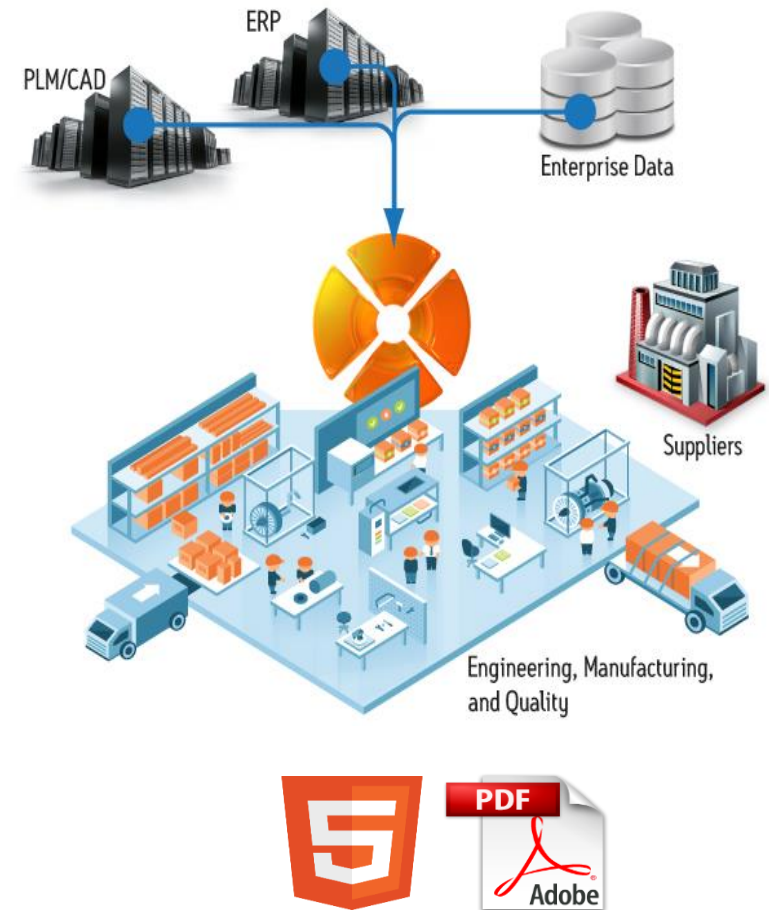
**Anark Corporation HQ** in Boulder, Colorado, with offices in the Detroit, Washington DC, San Francisco, and Bangalore, India

Stephen Collins



Connecting The Digital Thread

- Enable manufacturers to easily transform critical PLM & ERP data into powerful, role-and-use-case-specific 3D PDF documents and HTML5 web content that can be consumed on virtually any device
- Empower knowledge workers along the Digital-Thread to communicate and collaborate more effectively and securely throughout engineering, manufacturing, supply-chain and field service operations.
- Support powerful model-based enterprise (MBE) process change, yielding higher quality products, accelerated release cycles, and reduced scrap and material waste, netting substantial cost savings for OEMs and their suppliers.



Video 7 goes here



Dear Past,  
Thanks for all the lessons.  
Dear Future,  
I'm ready...

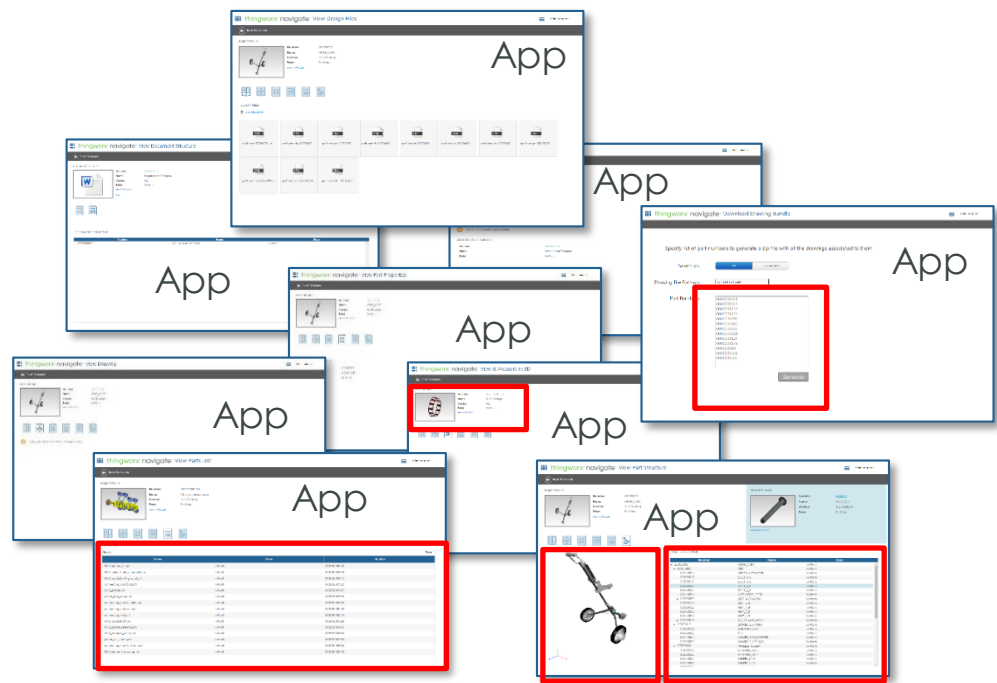
A hand holding a piece of white chalk is visible in the bottom right corner of the image, positioned as if it has just finished writing the last line of text on the chalkboard.

# NAVIGATE 2.0 VISION



## Current Navigate

A set of OOTB task-based, role-based PLM tasks to answer a specific need.



## Future Navigate

App builder - solution to build role-based apps that meet a wide variety of end user needs





## Customers apps

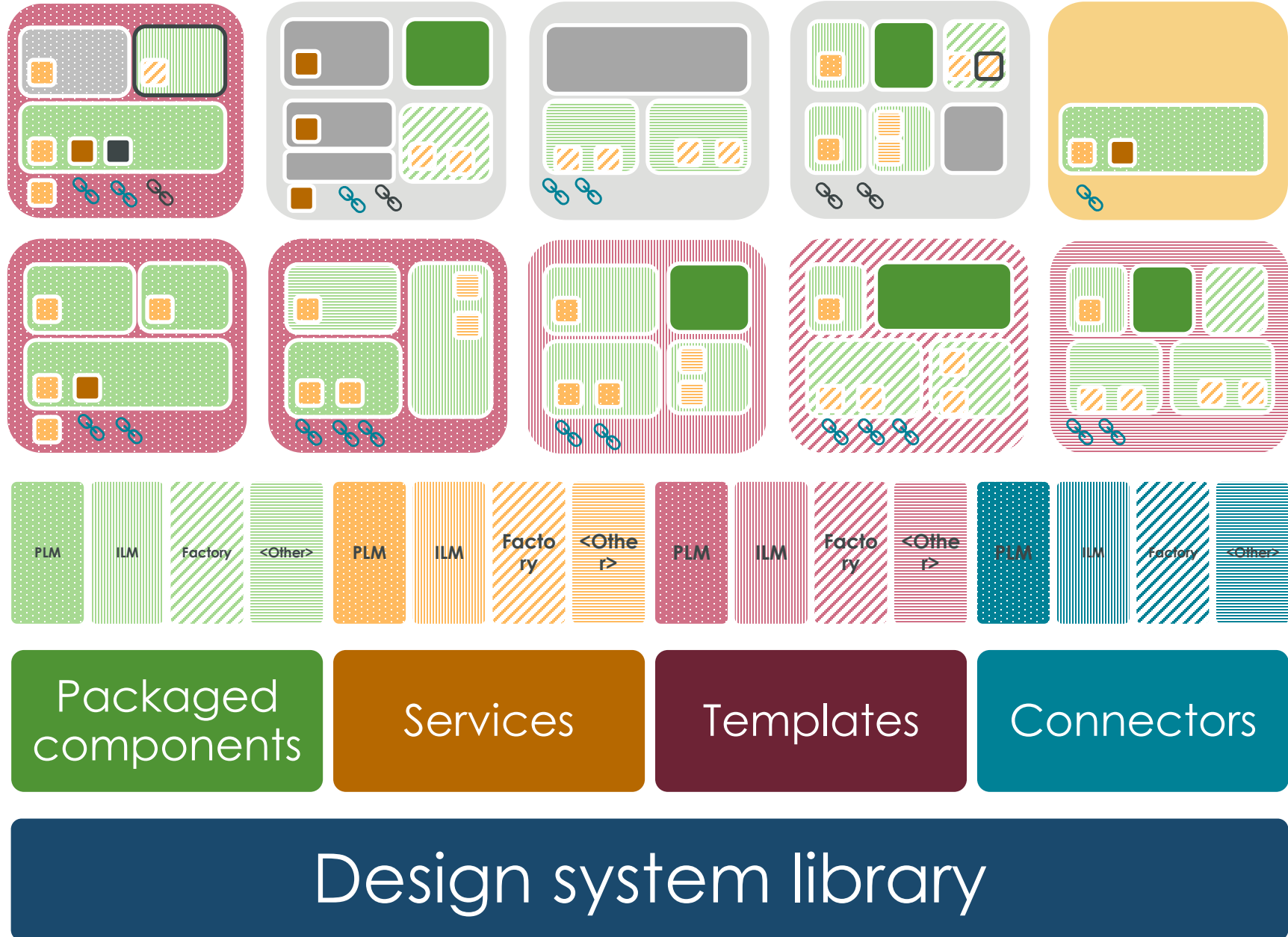
- Customized PTC apps
- Standalone apps
- Embedded apps

## PTC Apps

## Domain specific Components

## Generic Components

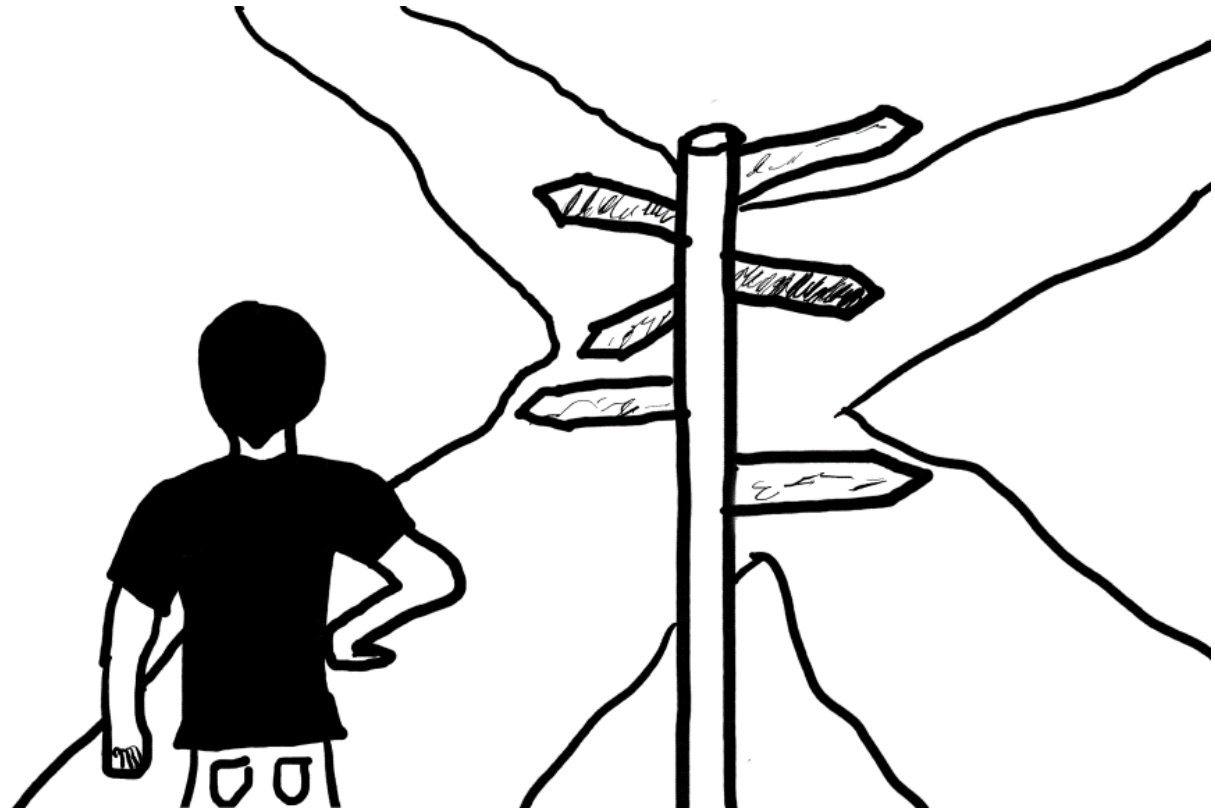
## PTC design system





## AGENDA

# GETTING STARTED WITH THINGWORX NAVIGATE



# BASIC LEARNING PATH

- **Applies To:**
  - Customers looking to install and leverage the apps as they come out of the box
- **Key Concepts:**
  - Installation
  - Configuration/Tailoring
- **Recommended Documentation:**
  - ThingWorx Navigate Installation and Configuration Guide
  - Platform Support Matrix for ThingWorx Navigate
- **Recommended eLearning:**
  - PTC Navigate Install and Configure 1.X
    - Good “overview” type of material covering the installation
  - Introduction to ThingWorx Navigate 1.X apps
    - Describes what each Nav app does
  - Business Administration of ThingWorx Navigate
    - Covers basic tailoring options for each Navigate app
- **Recommended Expert Sessions**
  - ThingWorx Installation
  - Overview of PTC Navigate View PLM App Extension
  - Functionality and Tailoring in ThingWorx Navigate

Navigate Basic  
Learning Path

# ADVANCED LEARNING PATH



- **Applies To:**
  - Customers who own the Navigate App Development Kit
- **Key Concepts:**
  - Installation
  - Configuration/Tailoring
  - Customization
- **Recommended Documentation:**
  - All from Basic Path
  - API documentation found in the Windchill PDMLink “Customization” tab
- **Recommended eLearning:**
  - All from Basic Path
  - Fundamentals of IoT Development with ThingWorx (IoTU)
    - Walks through the fundamentals of mashup creation/manipulation and overall app creation
  - ThingWorx Platform Administration (PLMS)
    - Covers ThingWorx admin topics such as users, groups, and other administrative tools
- **Recommended Expert Sessions:**
  - All from Basic Path
  - Overview of ThingModel
- **Recommended ILT Training:**
  - Introduction to ThingWorx
  - Building Custom Integrations w/ PTC Navigate (if Use Case aligns)
  - IoT Modeling with ThingWorx
  - IoT UI Development with ThingWorx

Navigate  
Advanced  
Learning Path

- **ThingWorx Help Center**
  - Fantastic resource for all things ThingWorx including REST API, extensibility information, and additional API documentation
- **Windchill Help Center**
  - Resource for all things Windchill including ODATA REST, Info\*Engine and other Windchill PLM specific information
- **Navigate Help Center**
  - Resource for all things Navigate including mashup, configuration, customization, extension, and connector information
- **PTC eSupport Portal**
  - Great place to go if you are having an issue. Check here to see if what you are experiencing is a known problem/bug
- **ThingWorx Developer Community**
  - Both PTC experts and customers come together to discuss application creation, technical issues, and general questions!
- **ThingWorx/Navigate eLearning**
  - PTC standard training materials. Sometimes revisiting your original training documents can get you moving again!
- **IOTU**
  - The next generation of training material from PTC!



ptc